

BIDDING AND CONTRACT REQUIREMENTS

Addendum No. 1

DATE: March 6, 2018

TEM Environmental, Inc.
443 Duane Street
Glen Ellyn, Illinois 60137

TO: PROSPECTIVE BIDDERS

SUBJECT: ADDENDUM NO. 1 TO THE BIDDING DOCUMENTS FOR
McHenry County College
Greenhouse Asbestos Abatement
TEM Project 55137

This addendum forms a part of the bidding and contract documents and modifies the original bidding documents dated February 20, 2018.

Pre-Bid Meeting Notes:

1. In addition to removing all of the greenhouse moveable equipment, the Owner will also remove all items to be salvaged prior to May 21, 2018. The abatement contractor may disconnect or remove any remaining objects attached to the glass system that interfere with the removal of the glass panels. Any such components removed by the abatement contractor may be left for disposal by the demolition contractor or may be disposed of by the abatement contractor. Abatement contractor shall coordinate the storage or disposal of such items with the Owner.
2. The Pre-Bid Meeting Attendee and Plan Holders lists are attached.

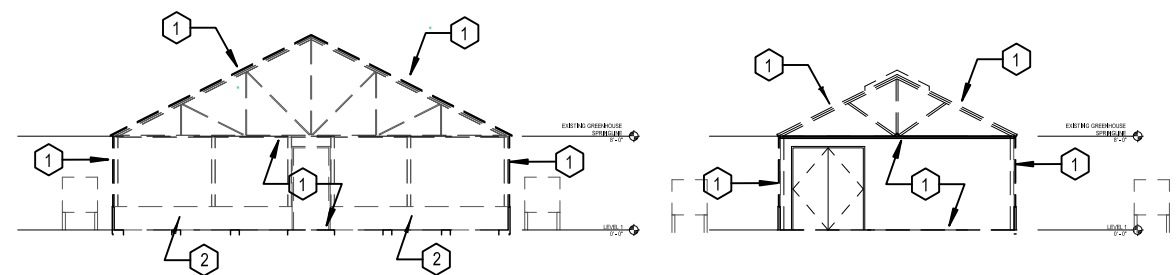
Drawings

1. ASB01 – Additional Detail Notes No 2 have been added to the drawing to reflect site conditions that the transite wall panels are present along all perimeter walls.

Bidder's Questions

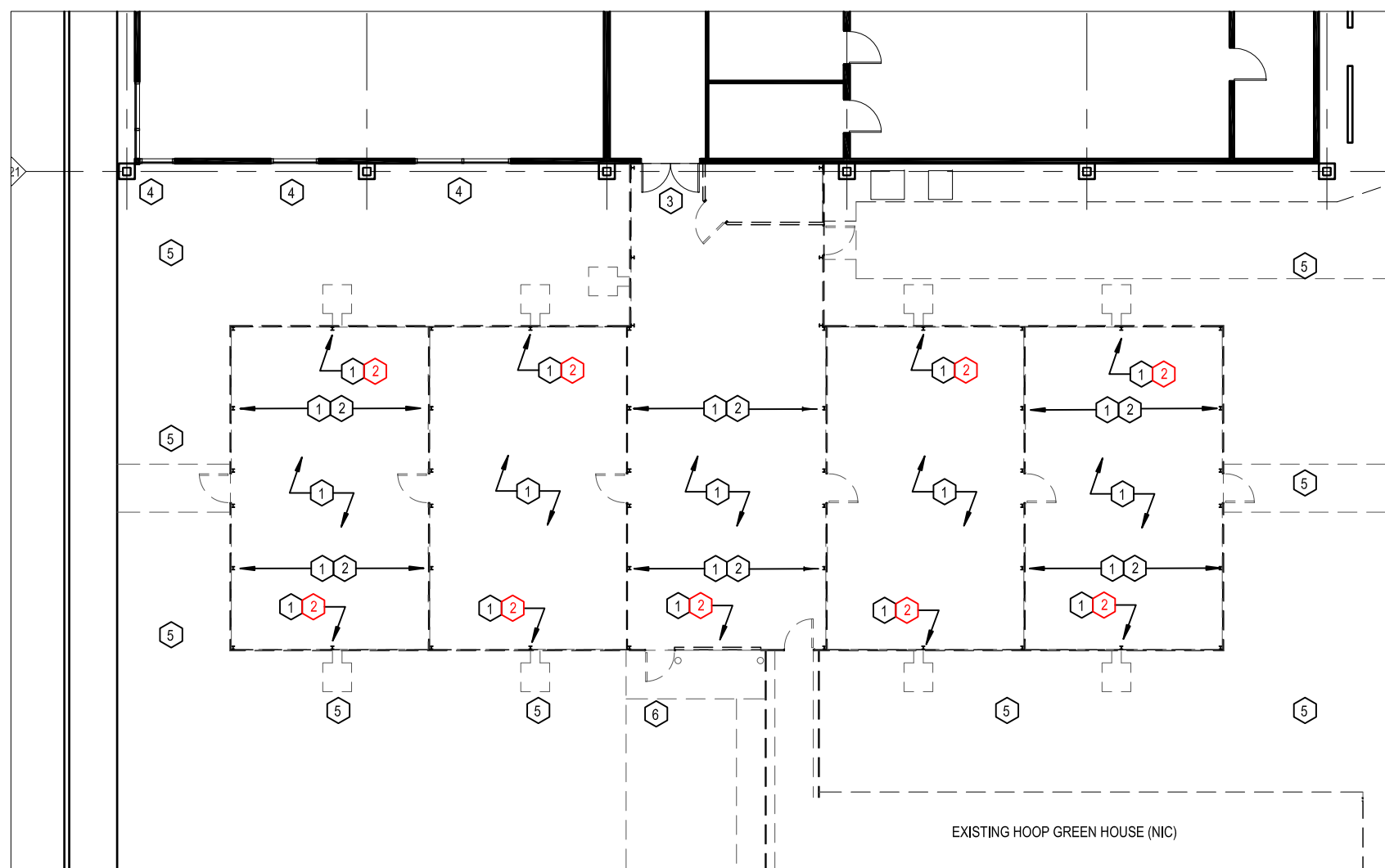
1. “Are we able to break the windows or are we to remove the window panels intact and dispose of?”
 - a. Answer: You may break the windows, however:
 - i. All glass must be cleaned up and a site specific safety plan must be submitted to address safety issues of working with broken glass.
 - ii. All components, including glass, that have caulk or caulk residue on them must be disposed of as ACM waste.

End 00901



1 ASB01 N/S ELEVATION ABATEMENT PLAN
SCALE 1/16" = 1' 0"

1 ASB01 E/W ELEVATION ABATEMENT PLAN
SCALE 1/16" = 1' 0"



1 ASB01 GREENHOUSE ABATEMENT PLAN
SCALE 1/16" = 1' 0"

GENERAL NOTES:

1. PLANTING BEDS AND OTHER MOVEABLE GREENHOUSE EQUIPMENT WILL BE REMOVED BY OTHERS PRIOR TO WORK ON THIS CONTRACT.
2. EXISTING MECHANICAL EQUIPMENT ATTACHED TO STRUCTURAL FRAMEWORK OF GREENHOUSE TO BE REMOVED FOLLOWING COMPLETION OF ASBESTOS ABATEMENT WORK.

ABATEMENT REFERENCED NOTES:

1. REMOVE GREENHOUSE GLASS WALLS, DOORS, GLASS ROOF, AND DISPOSE OF AS ASBESTOS CONTAINING WASTE. WINDOW PANEL CAULK HAS BEEN TESTED AND FOUND TO CONTAIN GREATER THAN ONE PERCENT ASBESTOS. PROTECT FLOOR SURFACES WITH ONE LAYER OF 6 MIL PLASTIC SHEETING DURING WORK, CAREFULLY REMOVE FLOOR POLY TO MINIMIZE SPREAD OF ACM.
2. REMOVE ACM TRANSITE WALL PANELS AND DISPOSE OF AS ASBESTOS CONTAINING WASTE.
3. CONSTRUCT WORK AREA ISOLATION BARRIER AT DOOR TO BUILDING.
4. INSTALL PRIMARY SEAL CONSISTING OF 2 LAYERS OF 6 MIL PLASTIC SHEETING OVER EXISTING BUILDING WINDOWS AND OVER FRESH AIR INTAKES ADJACENT TO THE ASBESTOS REGULATED AIR.
5. CONSTRUCT ASBESTOS REGULATED AREA USING BARRIER TAPE ON STURDY POSTS. PROTECT GROUND WITHIN REGULATED AREA WITH ONE LAYER OF 6 MIL POLY.
6. CONSTRUCT CONTROLLED ACCESS POINT. ALL WORKERS AND WASTE SHALL ENTER AND EXIT REGULATED AREA AT CONTROLLED ACCESS POINT.

ADDENDUM NO. 1 MARCH 2, 2018

SCOPE OF WORK

ASBESTOS ABATEMENT: Removal and disposal of asbestos containing materials per specification section 02 82 14 and applicable IDPH, IEPA and OSHA rules and regulations.

GRAPHIC SCALE

1" TRUE SCALE

CAUTION: IF THIS BAR DOES NOT MEASURE EXACTLY 1" THESE DRAWINGS ARE NOT PRINTED TO SCALE



ENVIRONMENTAL, INC.

443 Duane Street
Glen Ellyn, IL 60137
(630) 790-0880
(630) 790-0881 FAX



McHENRY COUNTY COLLEGE
2018 GREENHOUSE REPLACEMENT
ASBESTOS ABATEMENT PLANS

ISSUE/REVISION:

REV.	DATE	DESCRIPTION
01	01/30/18	ISSUED FOR 90%
1	03/02/18	ADDENDUM NO. 1

PROJECT:
2018 GREENHOUSE DEMOLITION

DRAWING TITLE:
GREENHOUSE ABATEMENT PLAN

DESIGNED BY: JAMES TUINENGA, CIH

DRAWN BY: JAMES TUINENGA, CIH

CHECKED BY:

PROJECT NO:

SCALE:

SHEET NO.

ASB01