

MCHENRY COUNTY COLLEGE

BASEBALL PRESS BOX

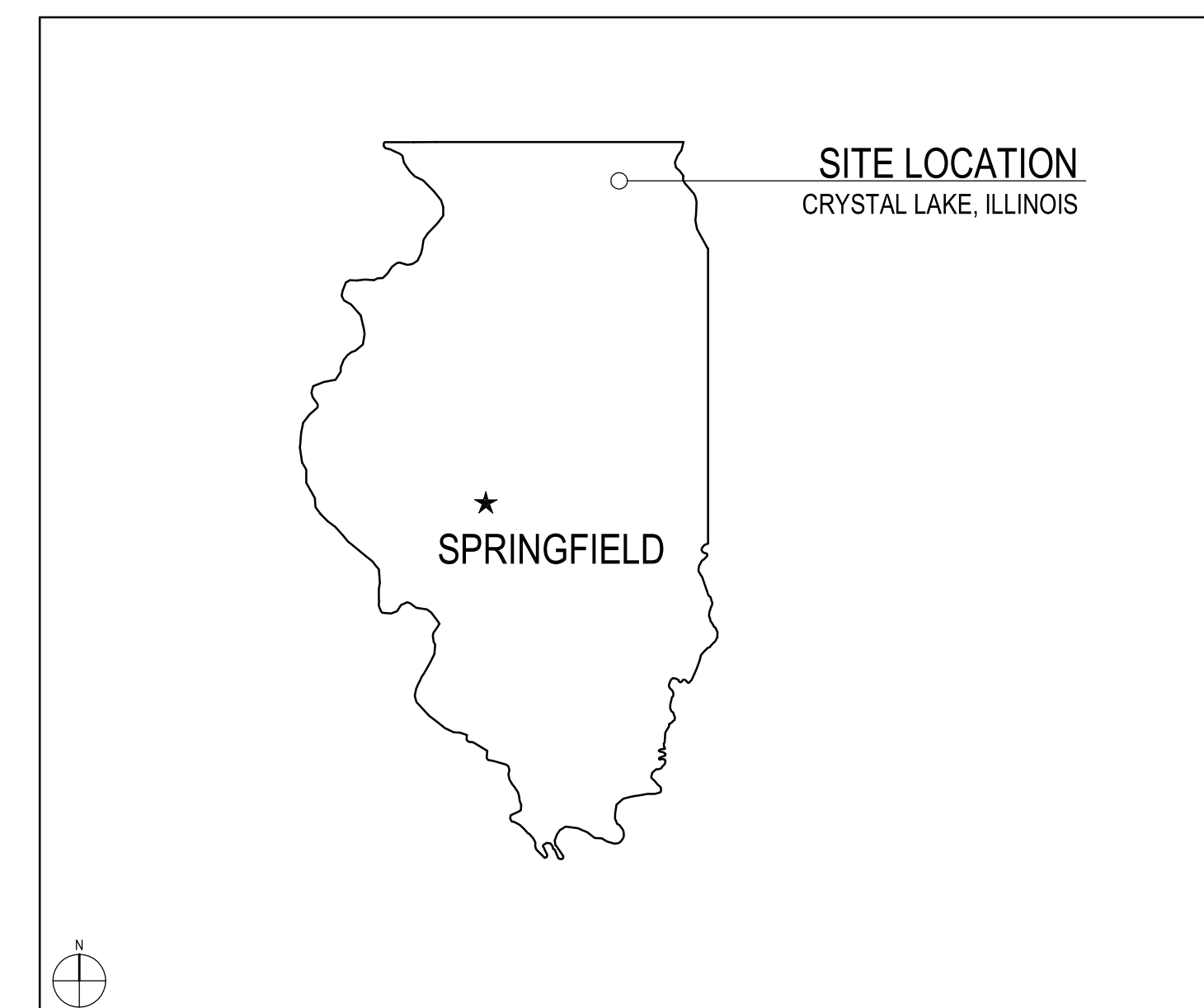
8900 US HIGHWAY 14, CRYSTAL LAKE, IL 60012

100% CONSTRUCTION DOCUMENTS

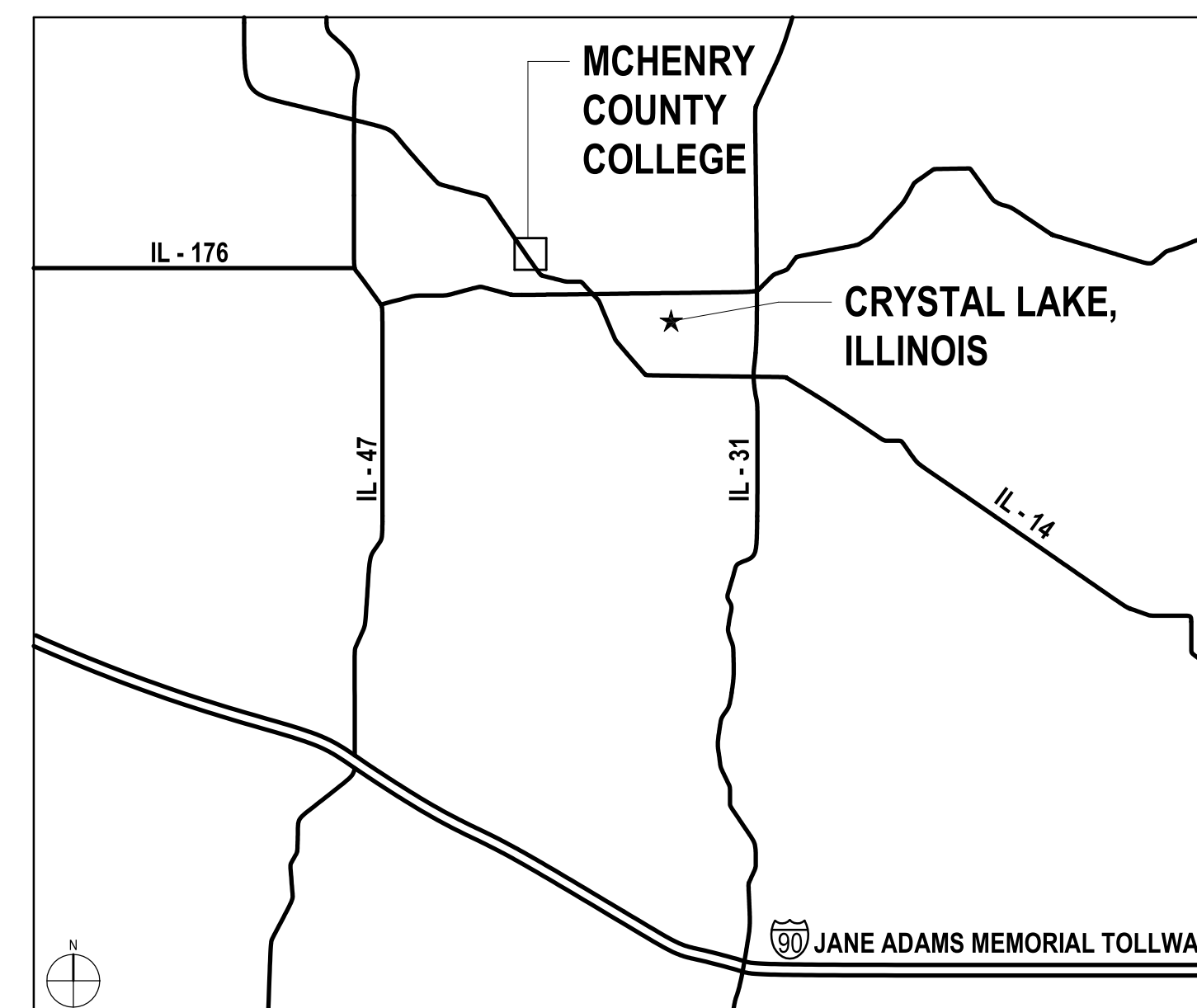
03/14/18

DKA PROJECT NO: 18-005

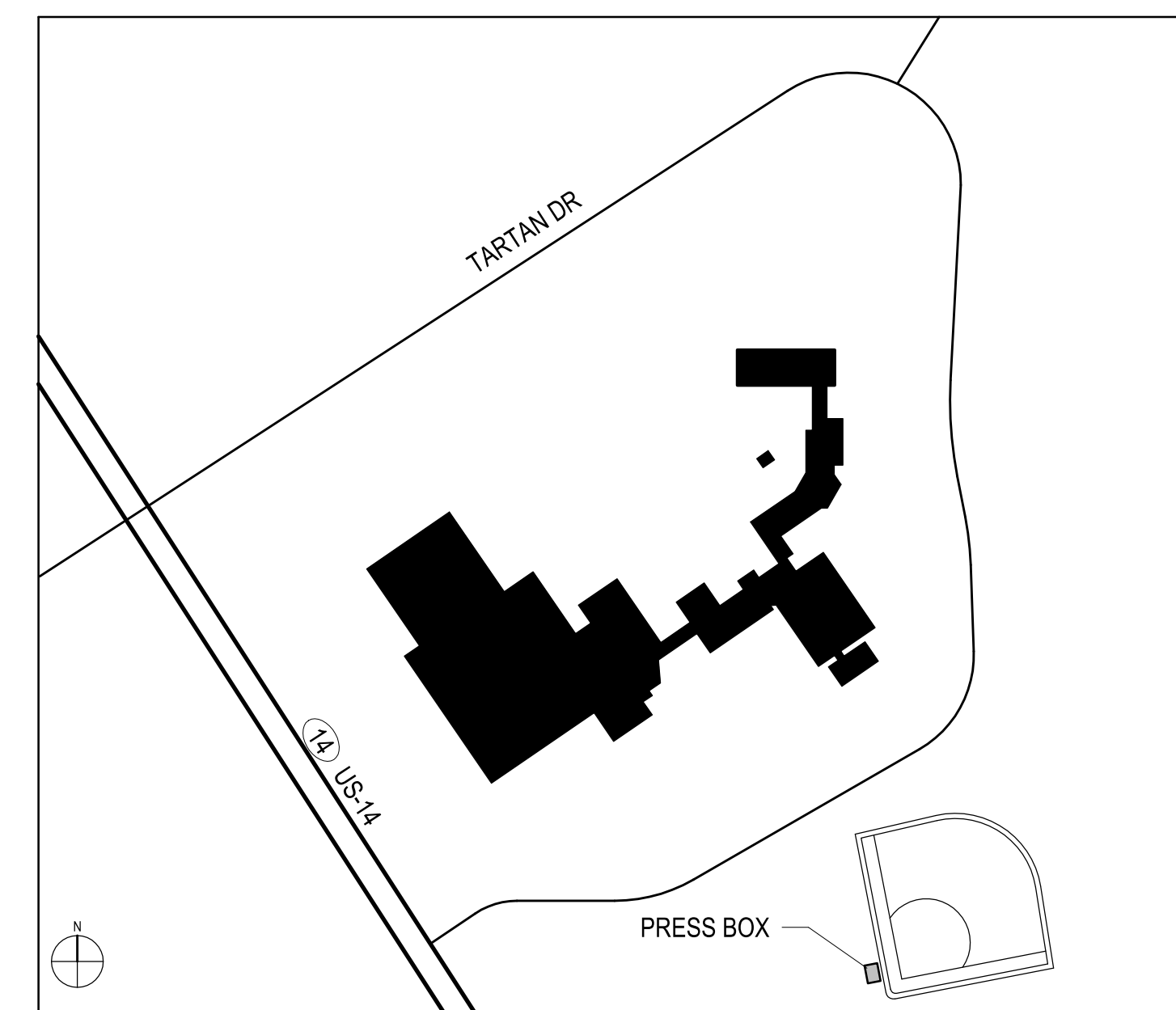
STATE LOCATION MAP



AREA MAP



CAMPUS MAP



SHEET INDEX

Architecture	
A1.10	FLOOR PLANS
A4.01	EXTERIOR ELEVATIONS AND WALL SECTIONS



ARCHITECT:

DEMONICA KEMPER ARCHITECTS
125 N. HALSTED ST., SUITE 301
CHICAGO, IL 60661
T: 312.496.0000 F: 312.496.0001

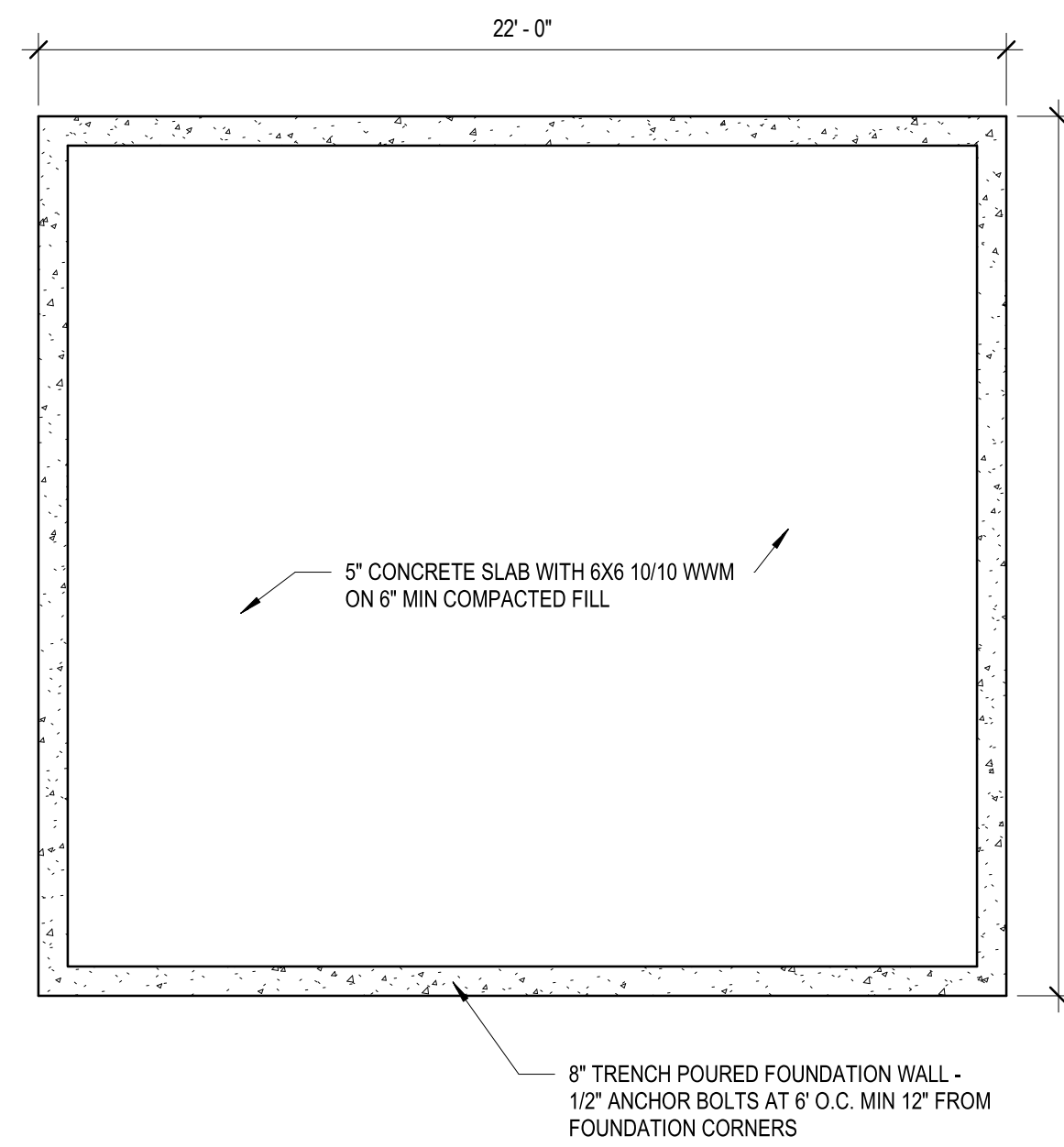


ARCHITECT OF
DEMONICA KEMPER ARCHITECTS
 125 N. HALSTED STREET, SUITE 301
 CHICAGO, IL 60661
 P. 312.496.0000

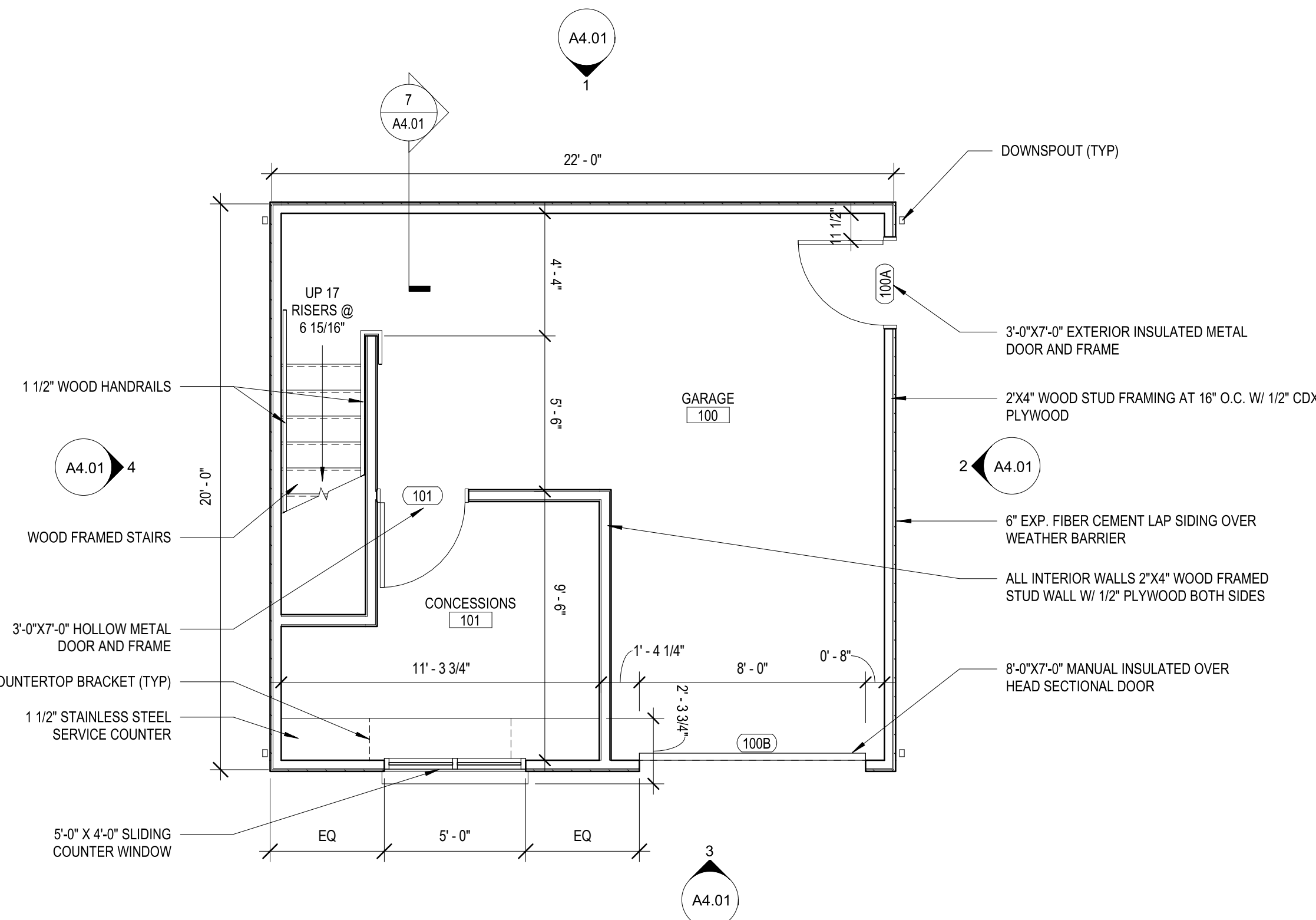
FLOOR PLAN & SECTION SYMBOLS LEGEND:

NOTE: REFER TO M.E.P.P. DRAWINGS FOR ADDITIONAL INFORMATION ON MECHANICAL, ELECTRICAL, AND FIRE PROTECTION SYSTEMS

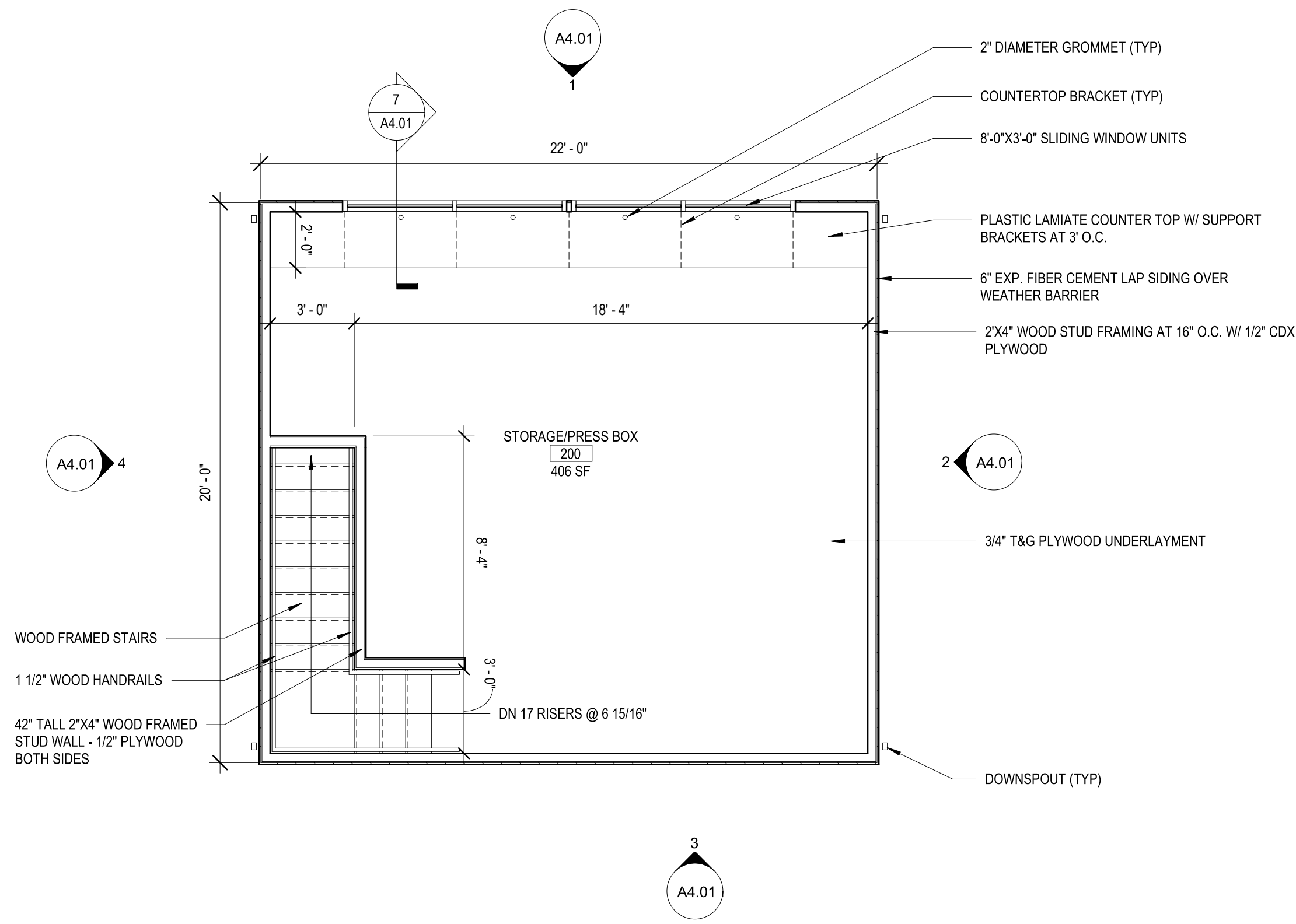
	ROOM NAME	ROOM TAG
	DOOR / FRAME TAG	
	WINDOW TAG	
	PARTITION TYPE	PARTITION MODIFIERS - REFER TO A10.01
	PLAN AND SECTION DETAIL CALLOUT	
	SECTION CALLOUT	
	ELEVATION CALLOUT	
	DATUM TAG	
	NEW WORK REFERENCED NOTES	
	DEMOLITION REFERENCED NOTES	
	TOILET ACCESSORY TAG	
	CASEWORK TAG	
	EQUIPMENT TAG	



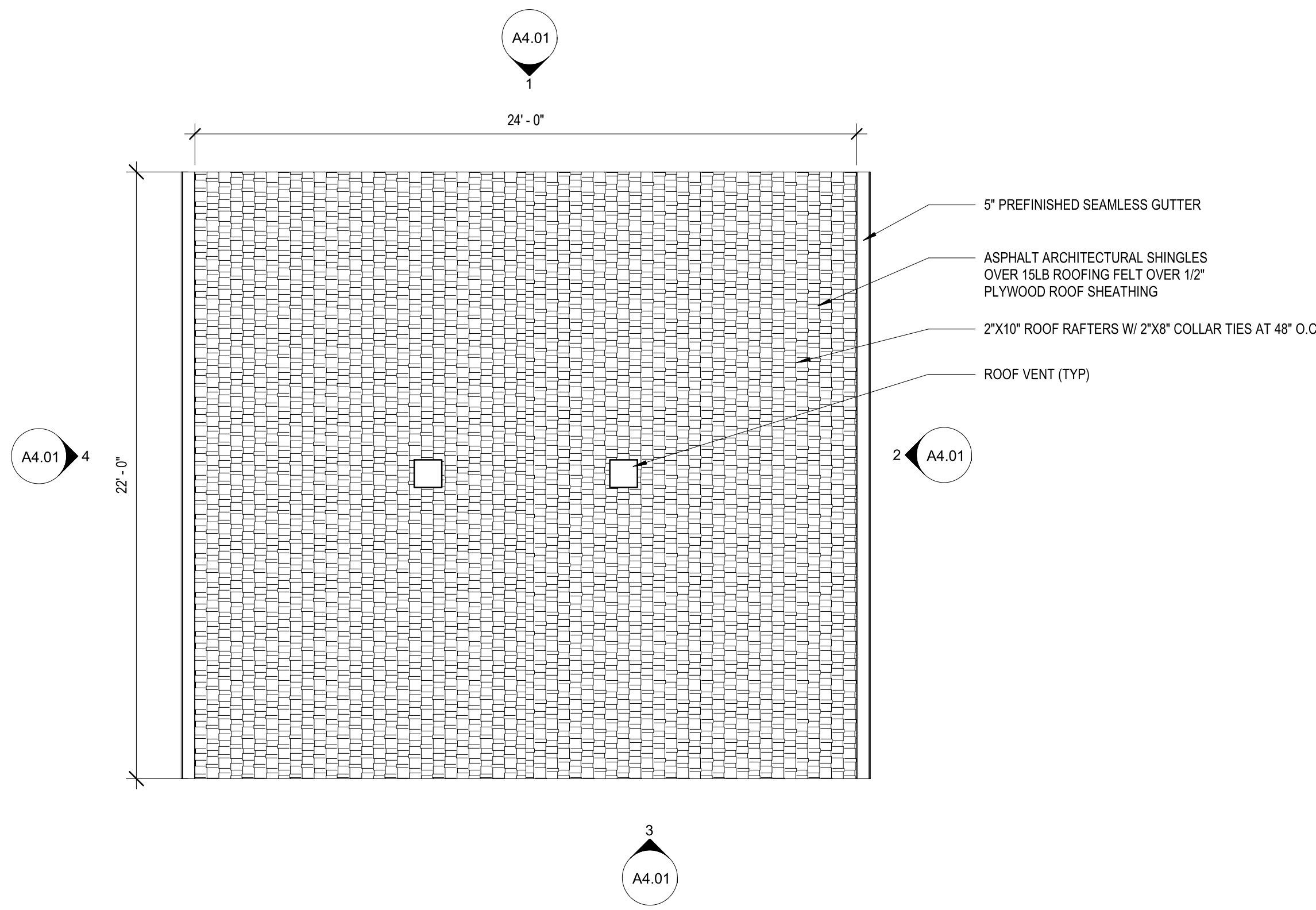
1 FOUNDATION PLAN
 1/4" = 1'-0"



2 1ST FLOOR
 1/4" = 1'-0"



3 2ND FLOOR
 1/4" = 1'-0"



4 ROOF PLAN
 1/4" = 1'-0"

MCHENRY COUNTY COLLEGE
BASEBALL PRESS BOX
 8900 US HIGHWAY 14, CRYSTAL LAKE, IL 60012
 DKA PROJECT NO: 18-005

KEY PLAN:

SHEET STATUS: 03/14/18
100% CONSTRUCTION DOCUMENTS

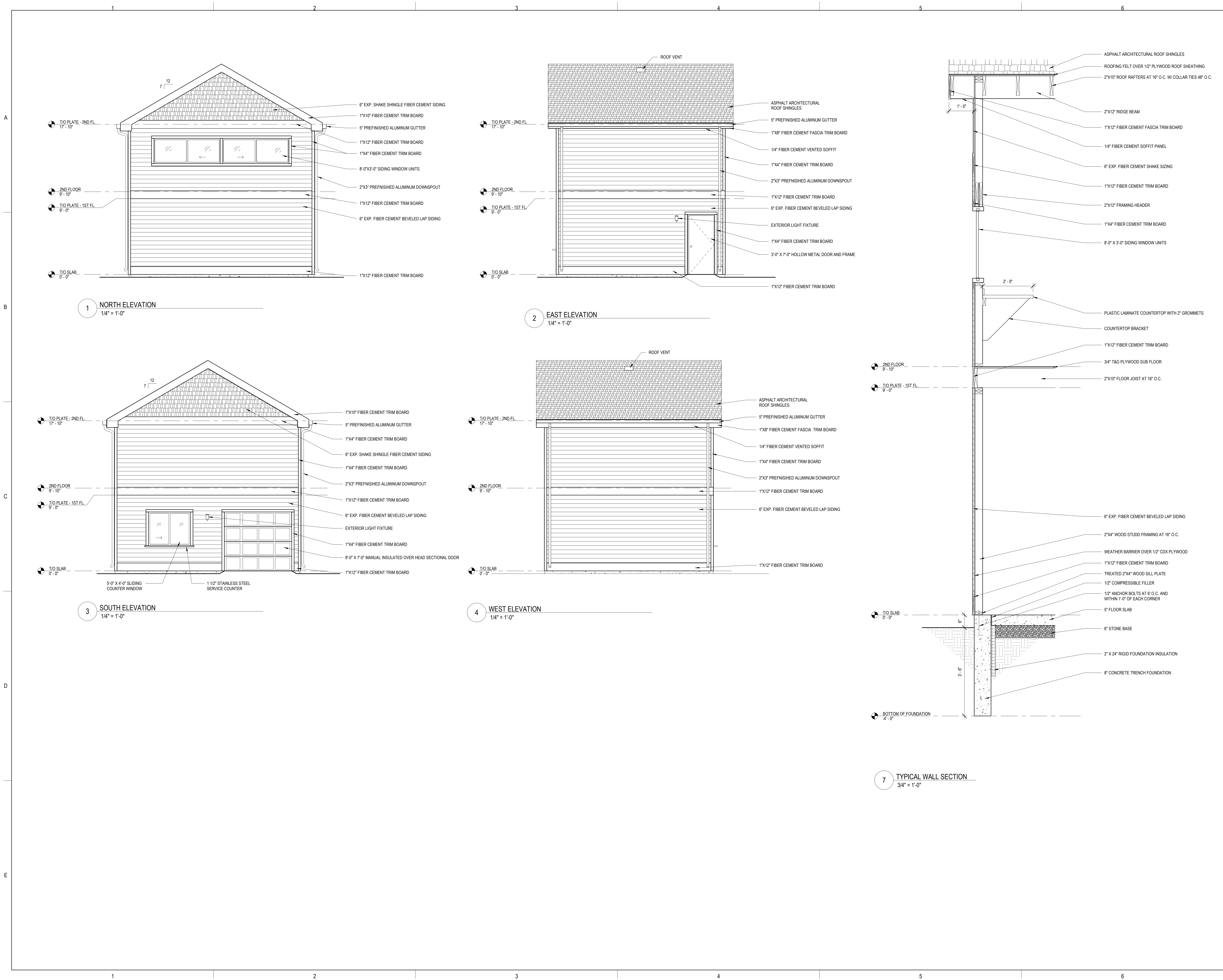
NO.	DESCRIPTION:	DATE:

SHEET TITLE:
FLOOR PLANS

SHEET NUMBER:
A1.10



ARCHITECT OF
DEMONICA KEMPER ARCHITECTS
 125 N. HALSTED STREET, SUITE 301
 CHICAGO, IL 60661
 P. 312.496.0000



MCHENRY COUNTY COLLEGE
BASEBALL PRESS BOX
 8900 US HIGHWAY 14, CRYSTAL LAKE, IL 60012
 DKA PROJECT NO: 18-005

KEY PLAN:

NO.	DESCRIPTION:	DATE:

SHEET TITLE:
EXTERIOR ELEVATIONS AND WALL SECTIONS

SHEET NUMBER:
A4.01