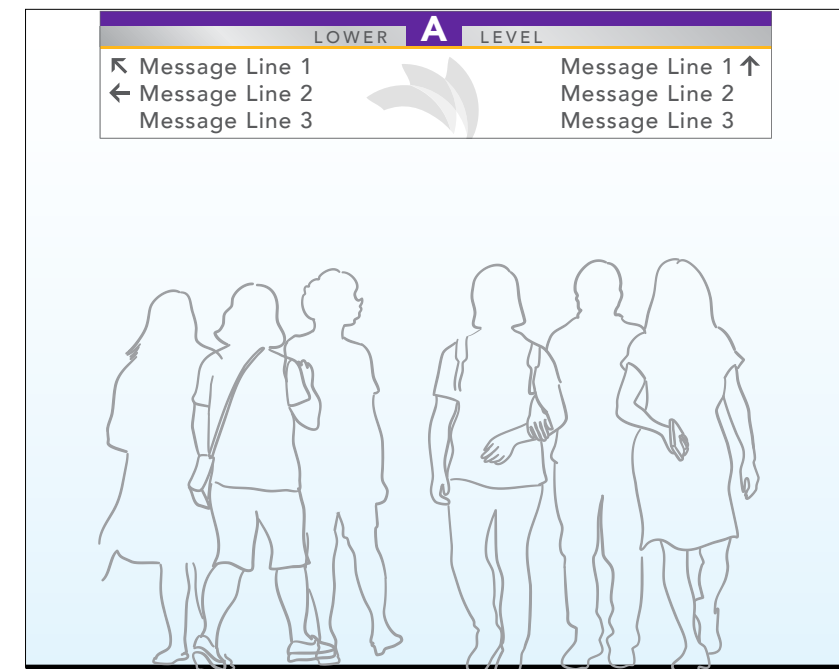


Overhead signs on Building Pathway to have purple background

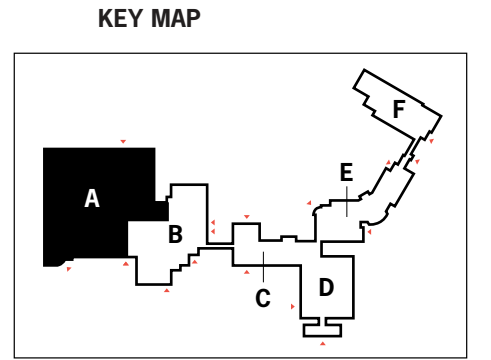


Overhead signs outside of Building Pathway to have white background

BUILDING A - LOWER LEVEL



- CIRCULATION KEY**
- Primary Circulation
 - Secondary Circulation
 - Vertical Circulation
 - Toilets
 - Information / Reception
 - Entrances



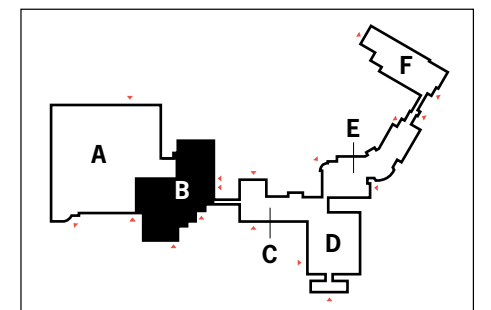
BUILDING B - LOWER LEVEL

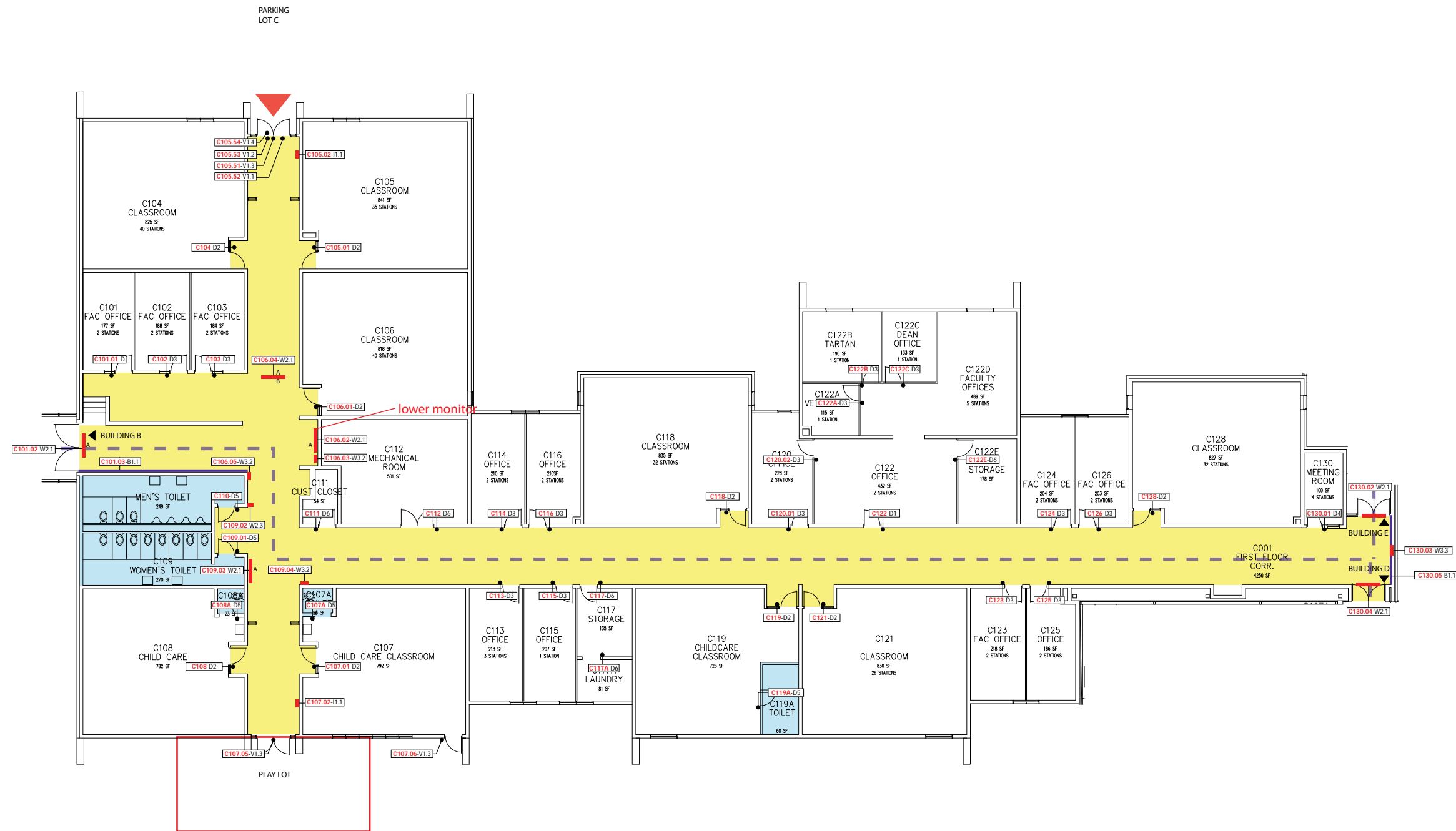


CIRCULATION KEY

- Primary Circulation
- Secondary Circulation
- Vertical Circulation
- Toilets
- Information / Reception
- Entrances

KEY MAP

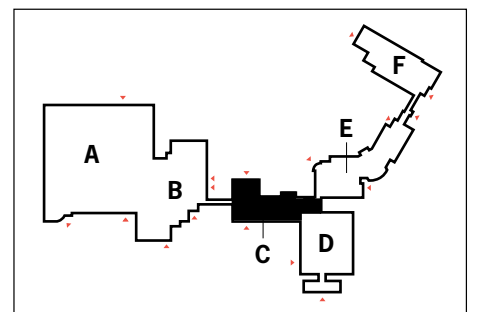




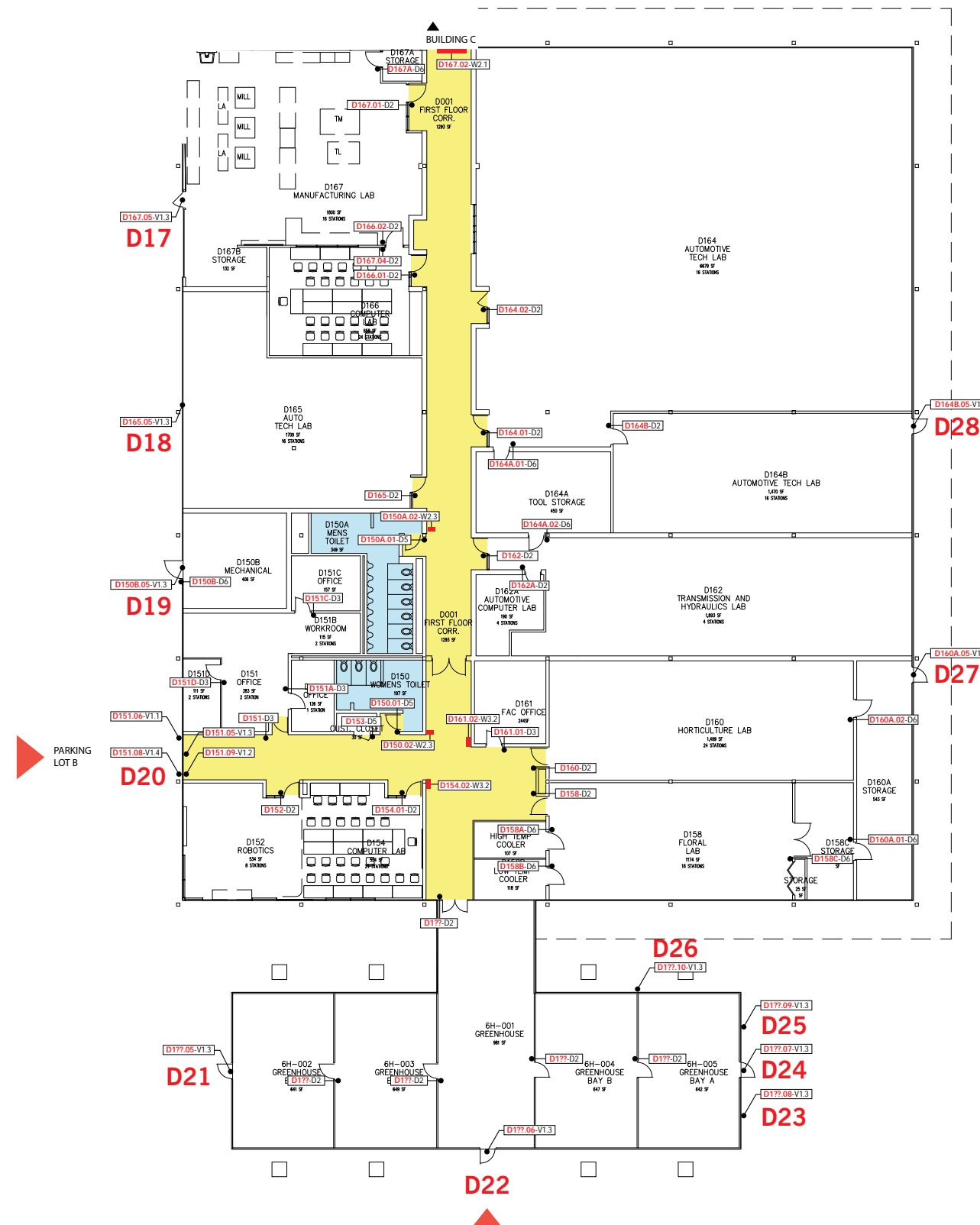
CIRCULATION KEY

- Primary Circulation
- Secondary Circulation
- Vertical Circulation
- Toilets
- Information / Reception
- Entrances

KEY MAP



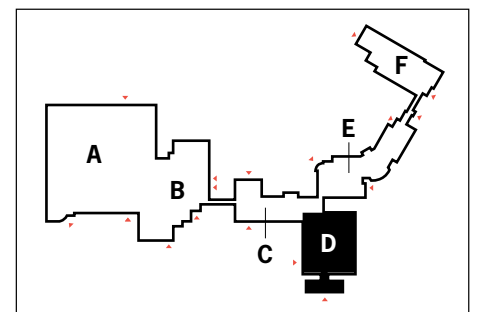
BUILDING D - LOWER LEVEL



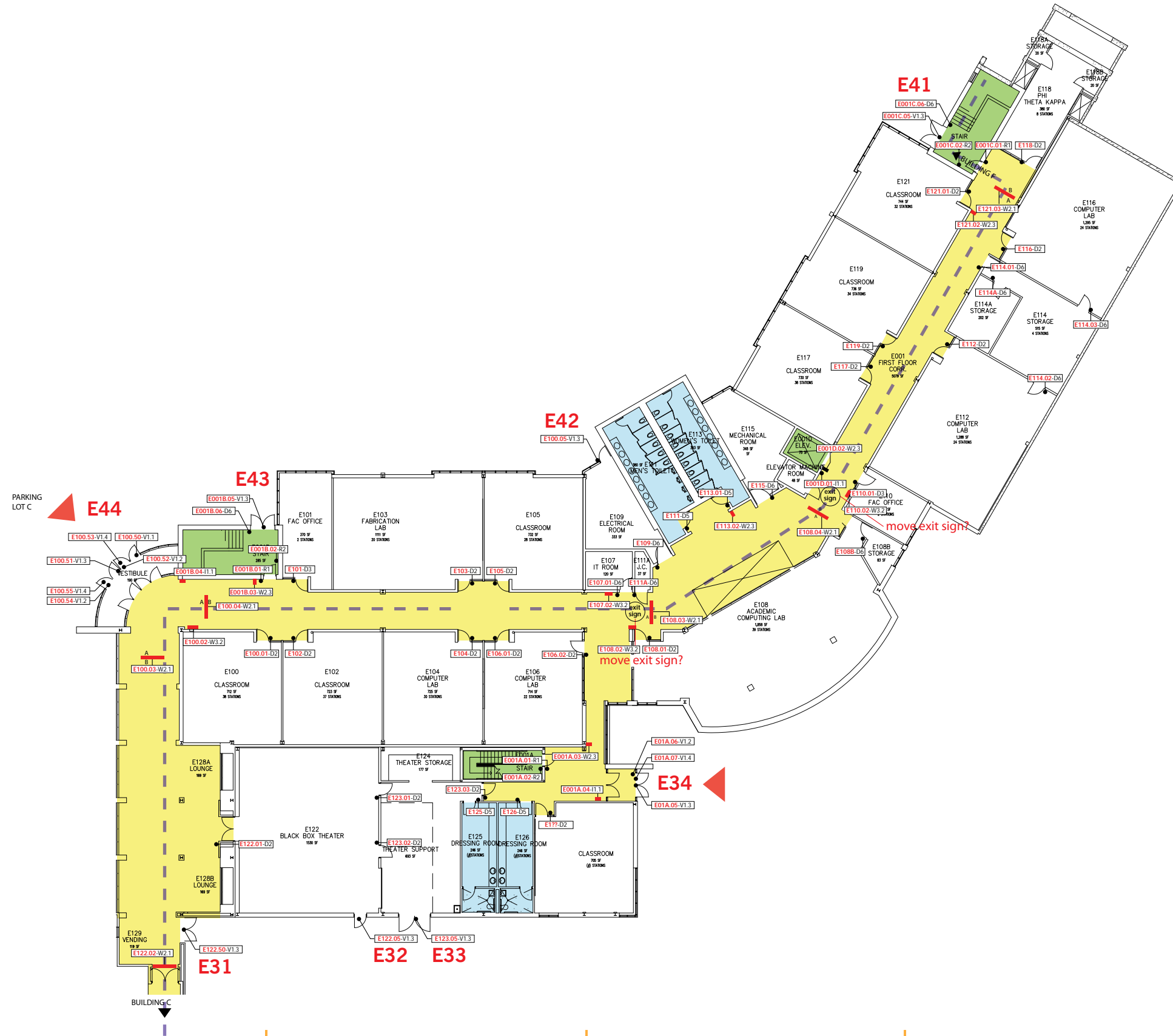
CIRCULATION KEY

- Primary Circulation
- Secondary Circulation
- Vertical Circulation
- Toilets
- Information / Reception
- Entrances

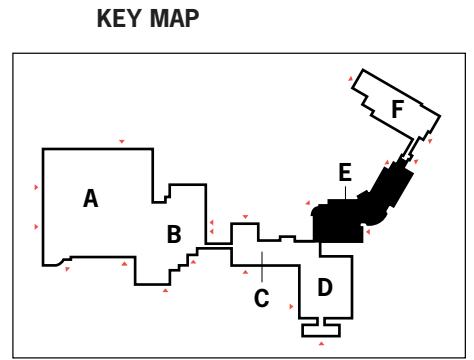
KEY MAP



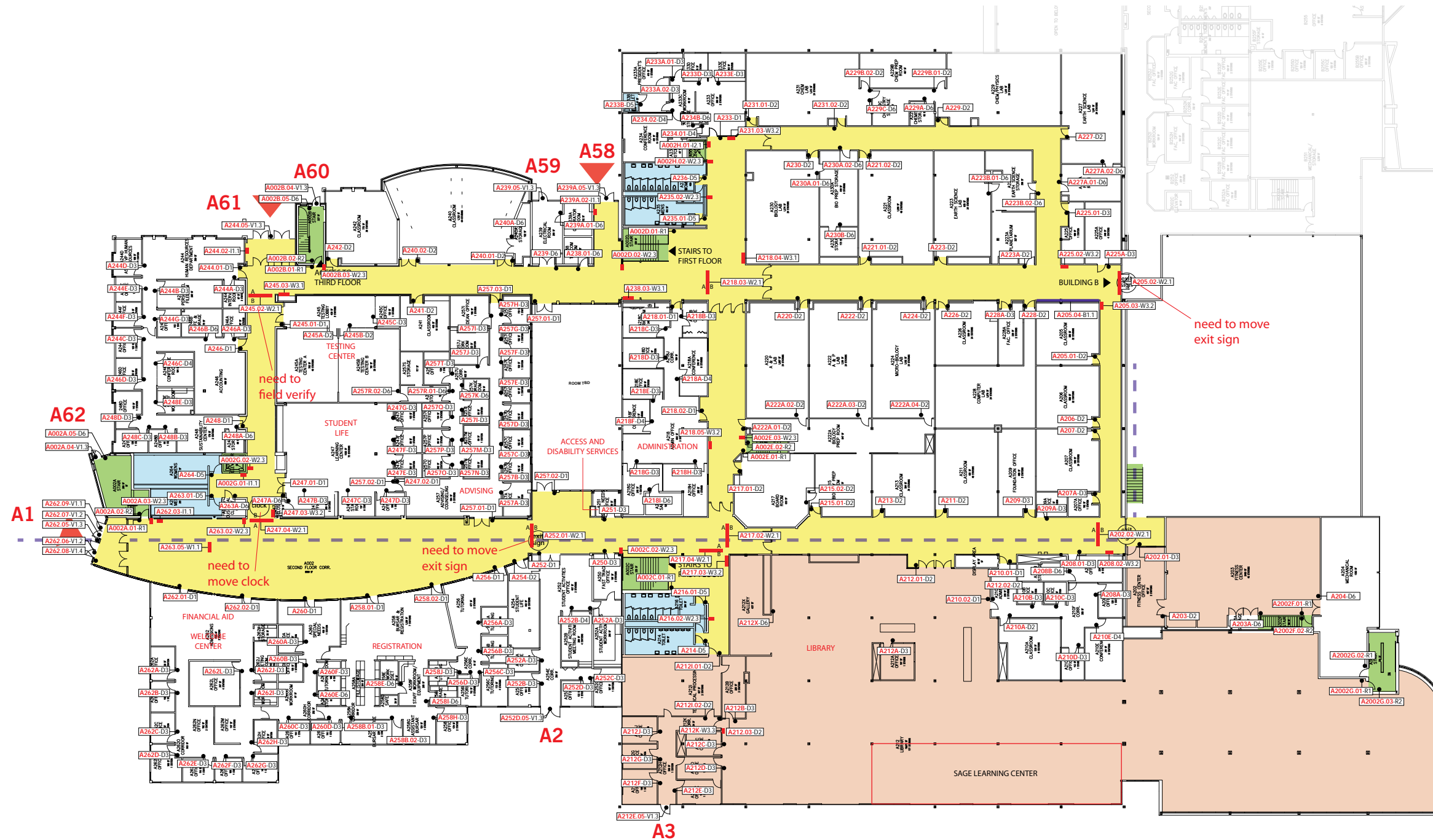
BUILDING E - LOWER LEVEL



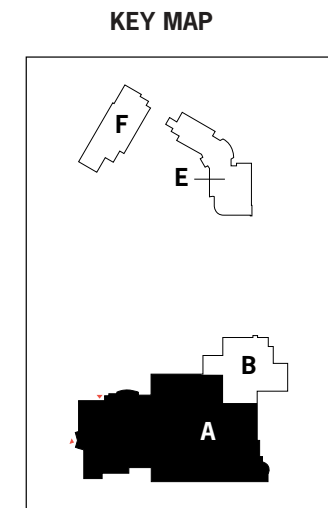
- CIRCULATION KEY**
- Primary Circulation
 - Secondary Circulation
 - Vertical Circulation
 - Toilets
 - Information / Reception
 - Entrances



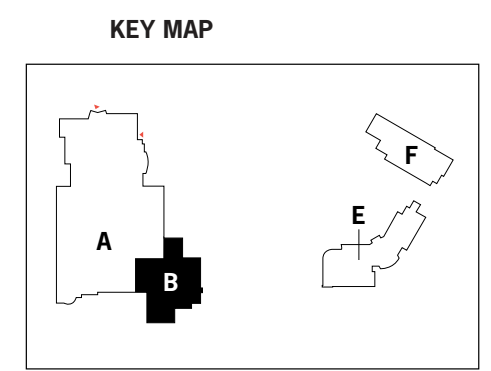
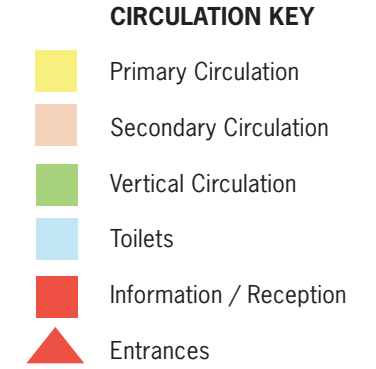
BUILDING A - MAIN LEVEL



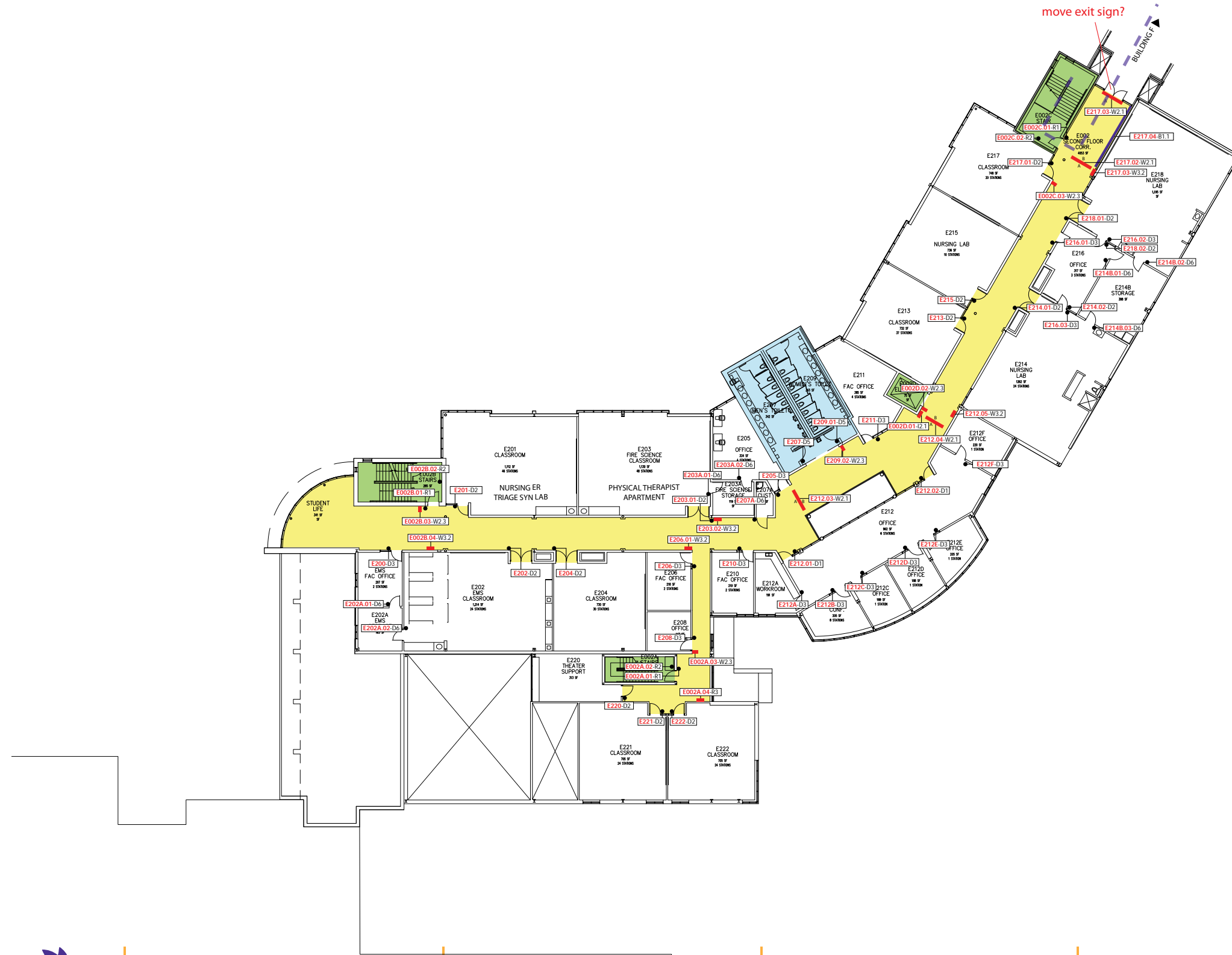
- CIRCULATION KEY**
- Primary Circulation
 - Secondary Circulation
 - Vertical Circulation
 - Toilets
 - Information / Reception
 - Entrances



BUILDING B - MAIN LEVEL



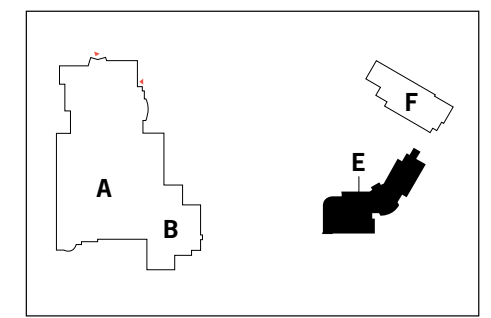
BUILDING E - MAIN LEVEL

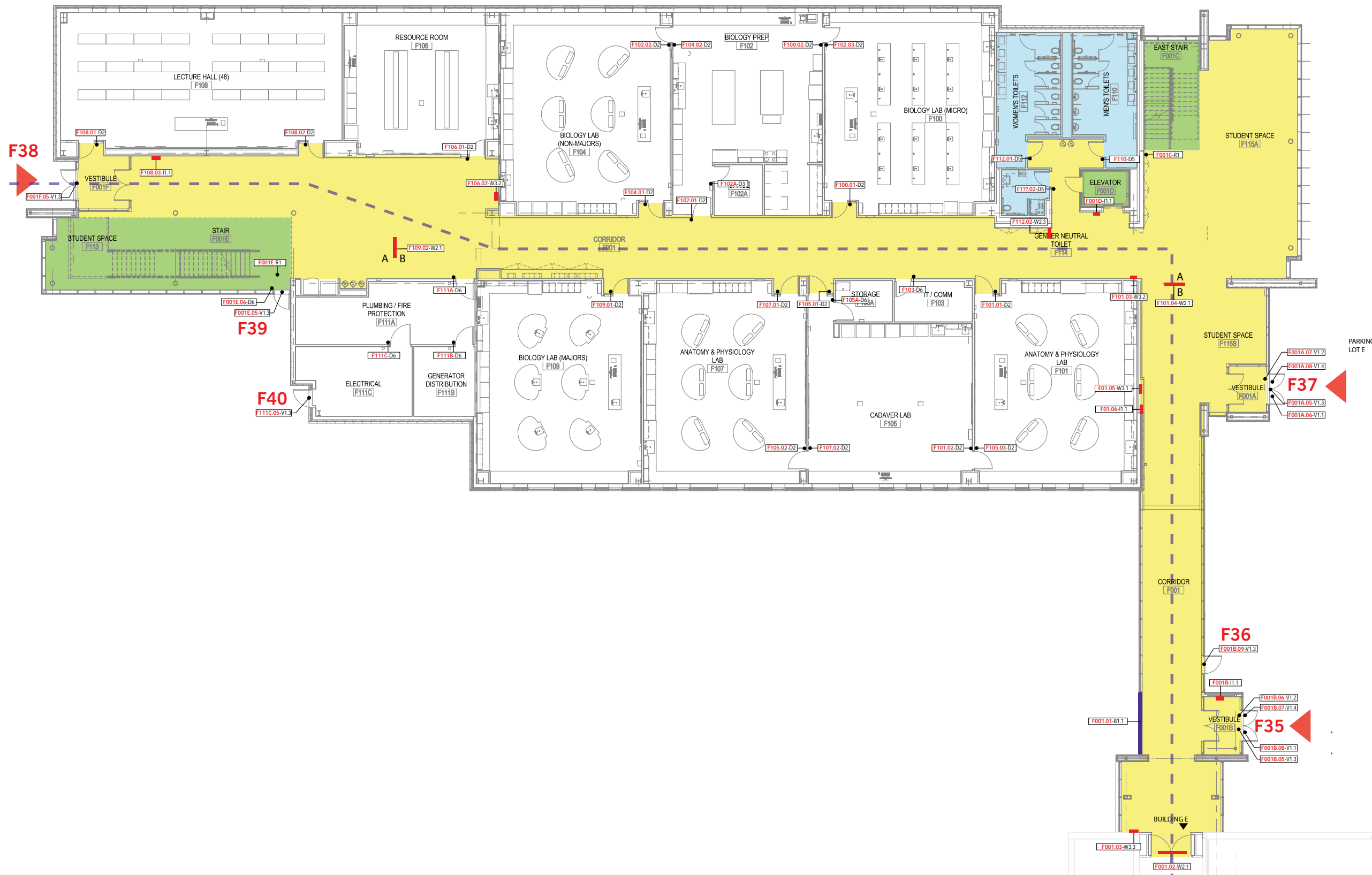


CIRCULATION KEY

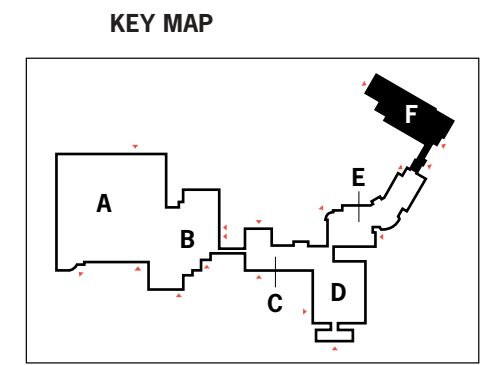
- Primary Circulation
- Secondary Circulation
- Vertical Circulation
- Toilets
- Information / Reception
- Entrances

KEY MAP





- CIRCULATION KEY**
- Primary Circulation
 - Secondary Circulation
 - Vertical Circulation
 - Toilets
 - Information / Reception
 - Entrances

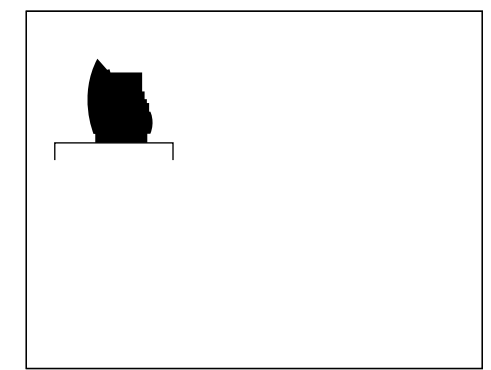


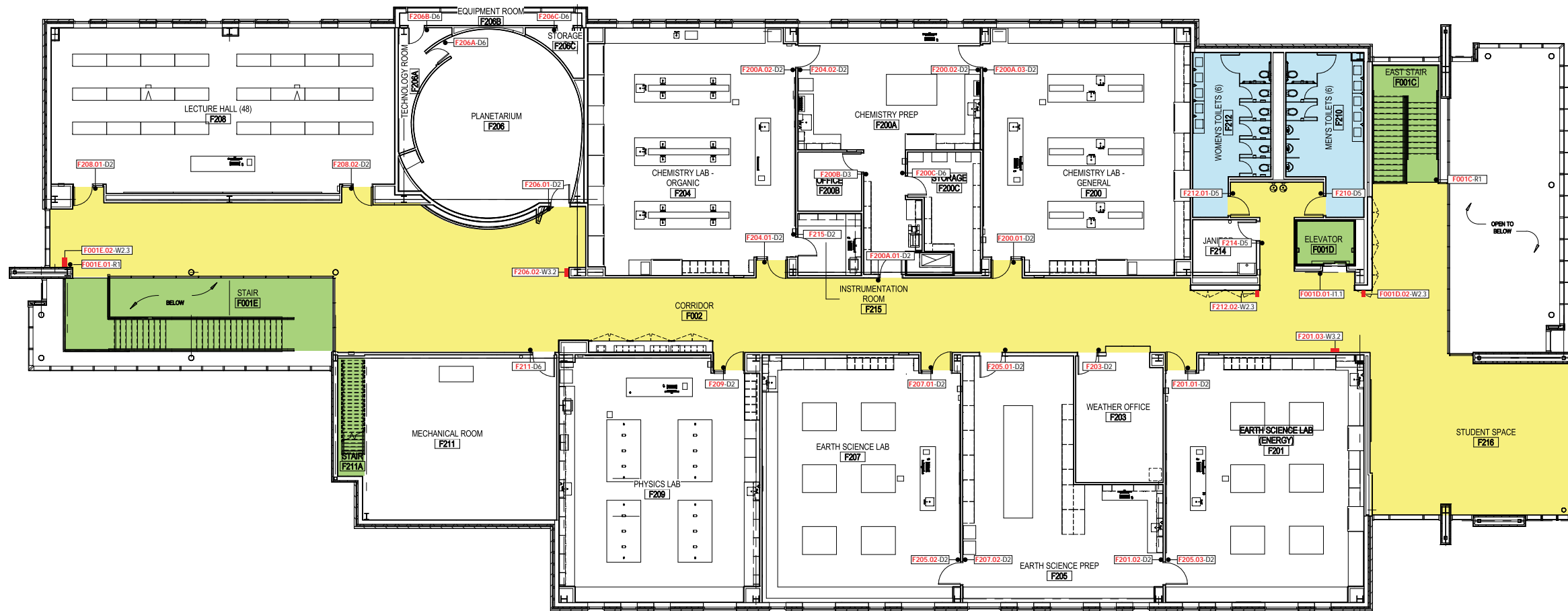


CIRCULATION KEY

- Primary Circulation
- Secondary Circulation
- Vertical Circulation
- Toilets
- Information / Reception
- Entrances

KEY MAP

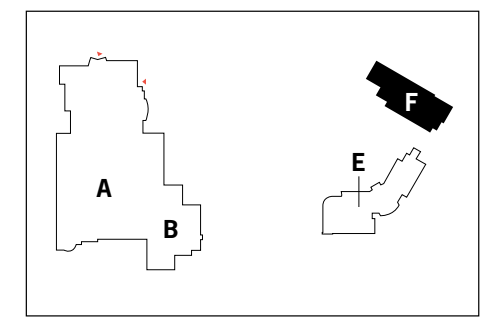


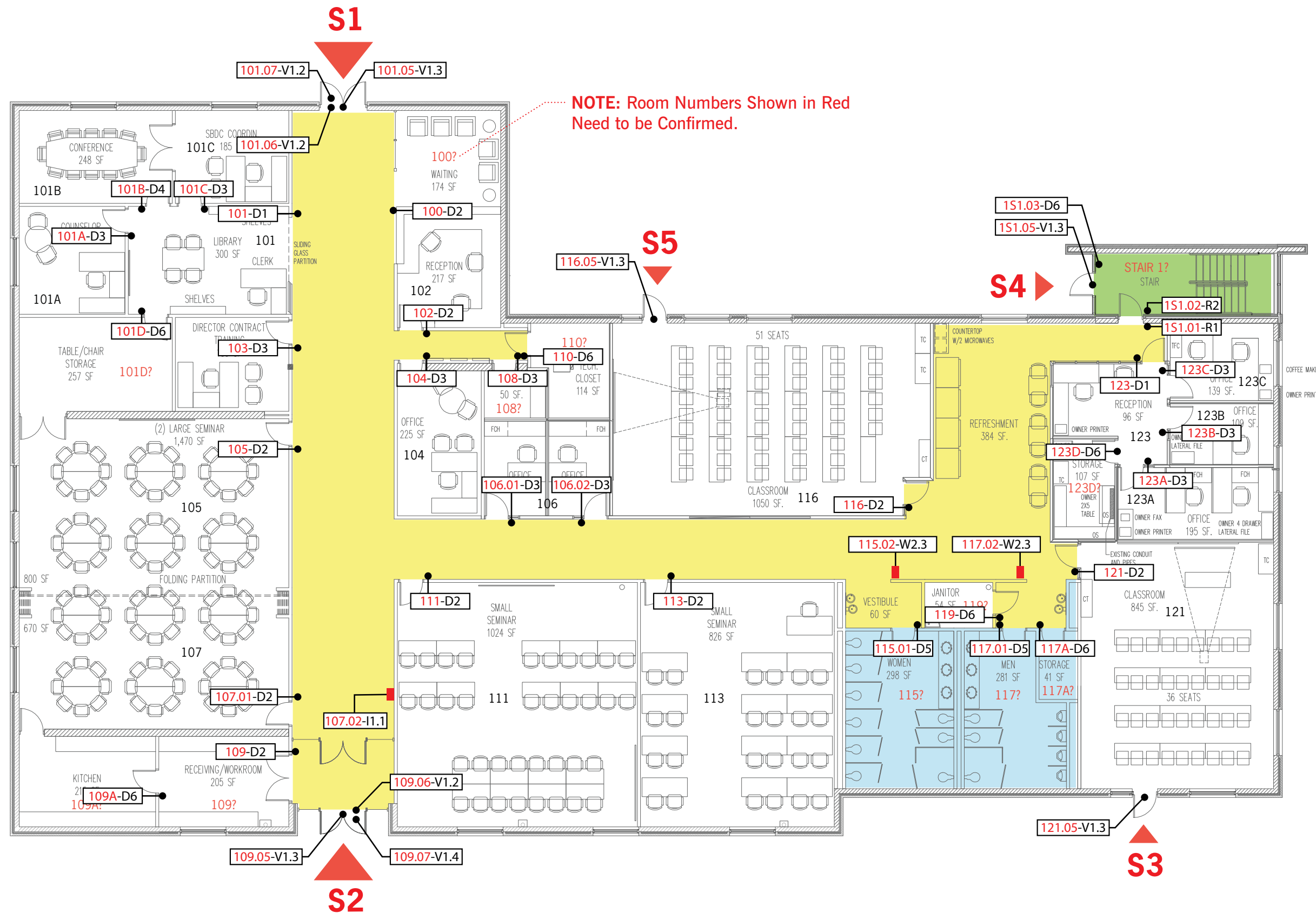


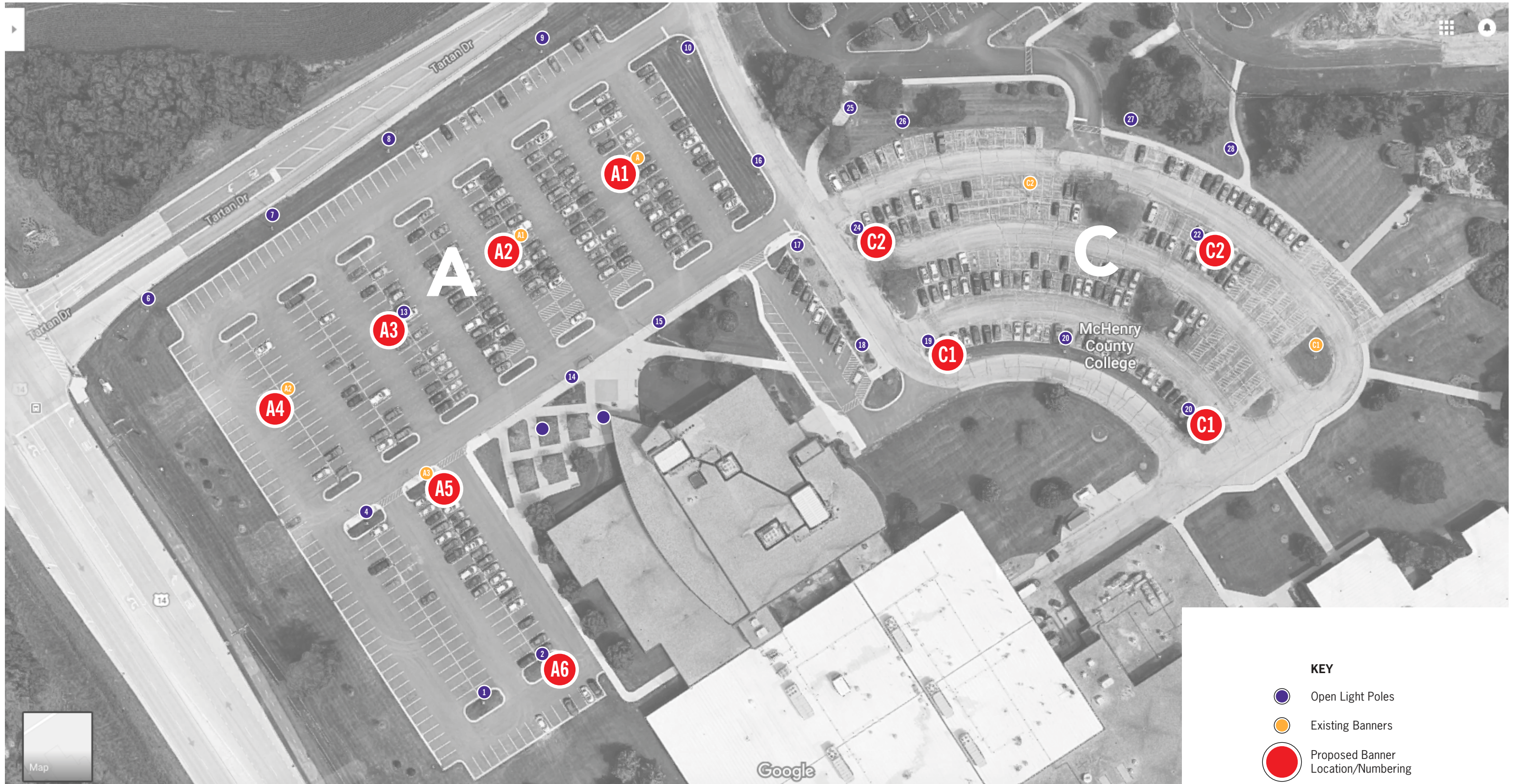
CIRCULATION KEY

- Primary Circulation
- Secondary Circulation
- Vertical Circulation
- Toilets
- Information / Reception
- Entrances

KEY MAP

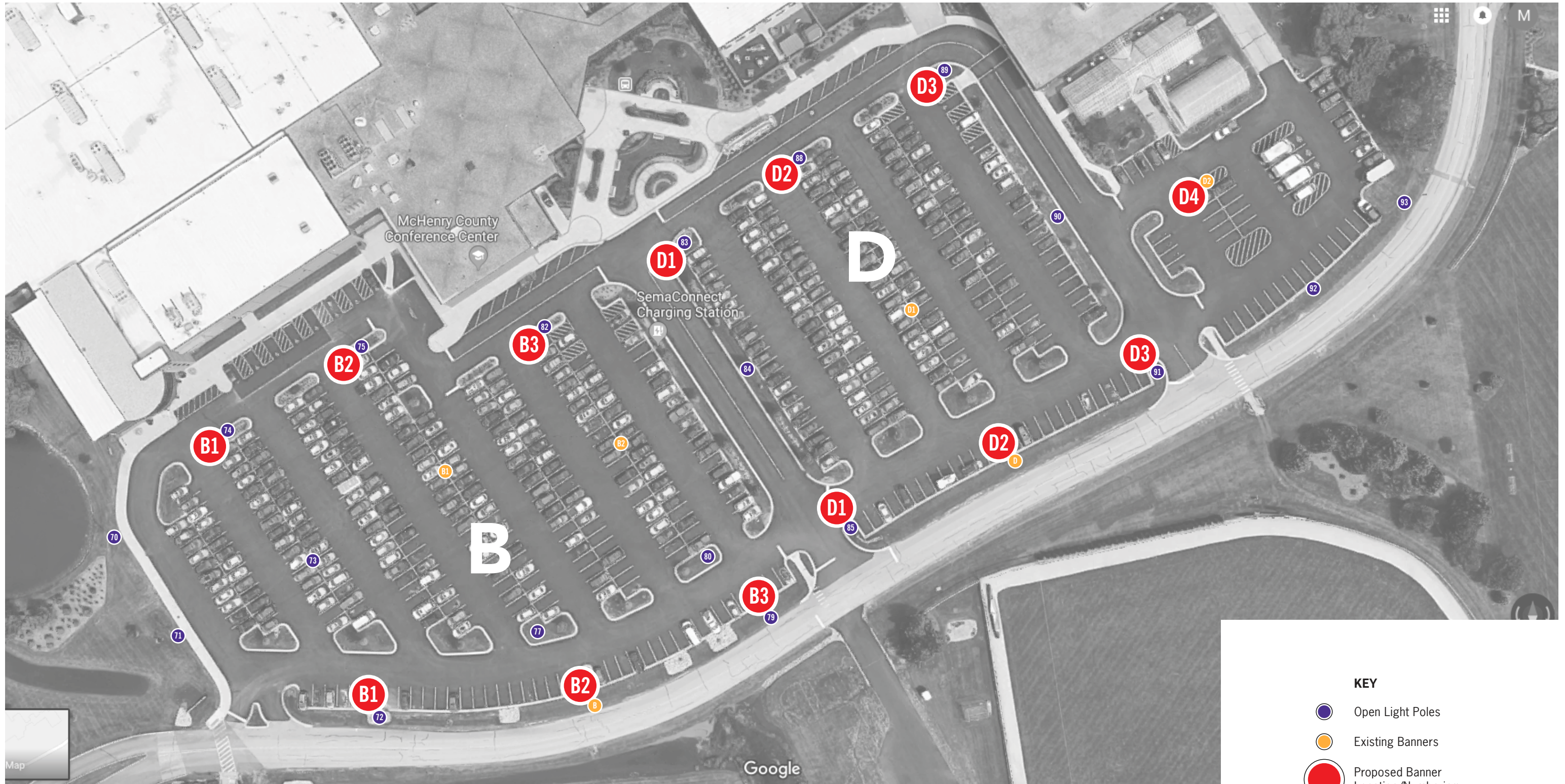






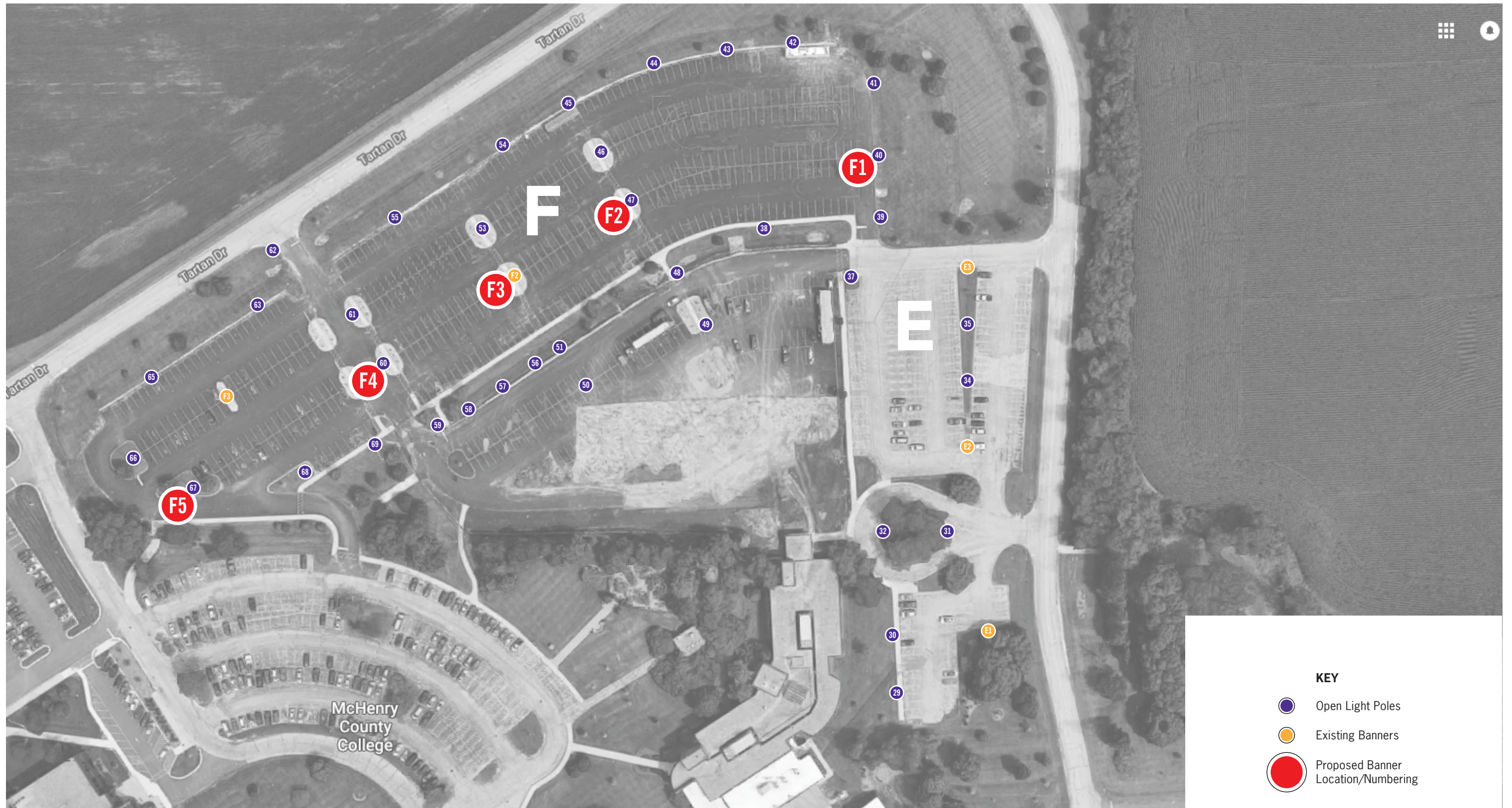
KEY

- Open Light Poles
- Existing Banners
- Proposed Banner Location/Numbering



KEY

- Open Light Poles
- Existing Banners
- Proposed Banner Location/Numbering

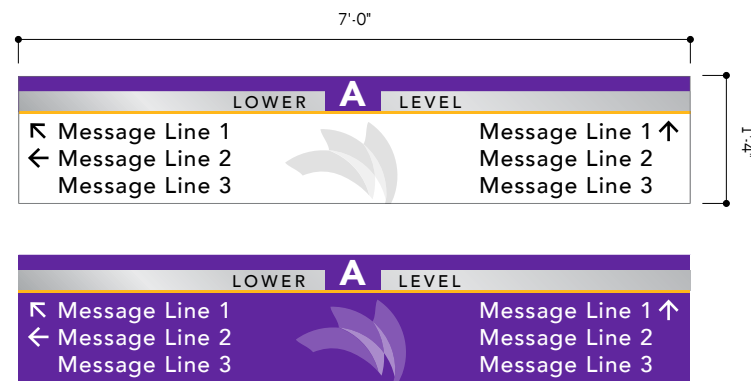


KEY

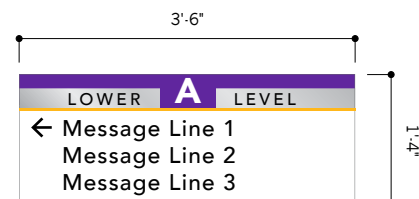
- Open Light Poles
- Existing Banners
- Proposed Banner Location/Numbering

Section 5

Sign Type Overview



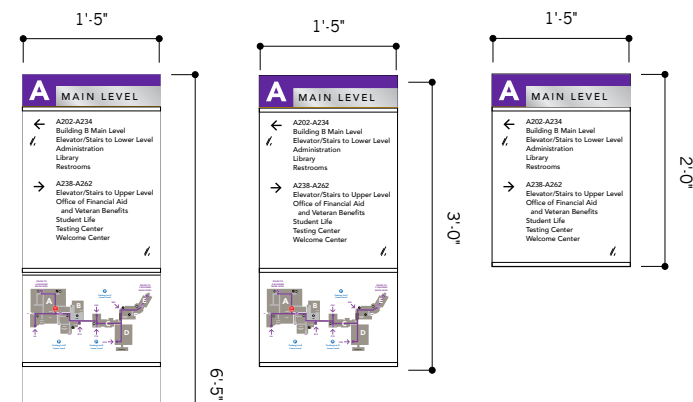
W2.1
Primary Overhead
Directional



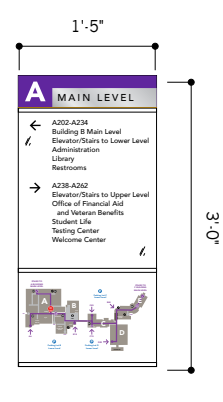
W2.2
Secondary Overhead
Directional



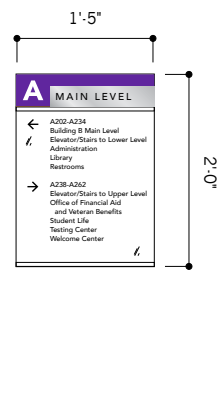
W2.4
Department ID



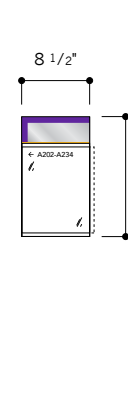
W1.1
Primary Directional
Pylon



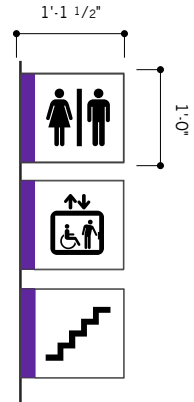
W3.1
Primary Directional
with Map



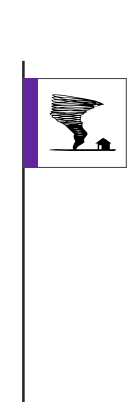
W3.2
Secondary Directional
Wall



W3.3
Tertiary Directional
Wall



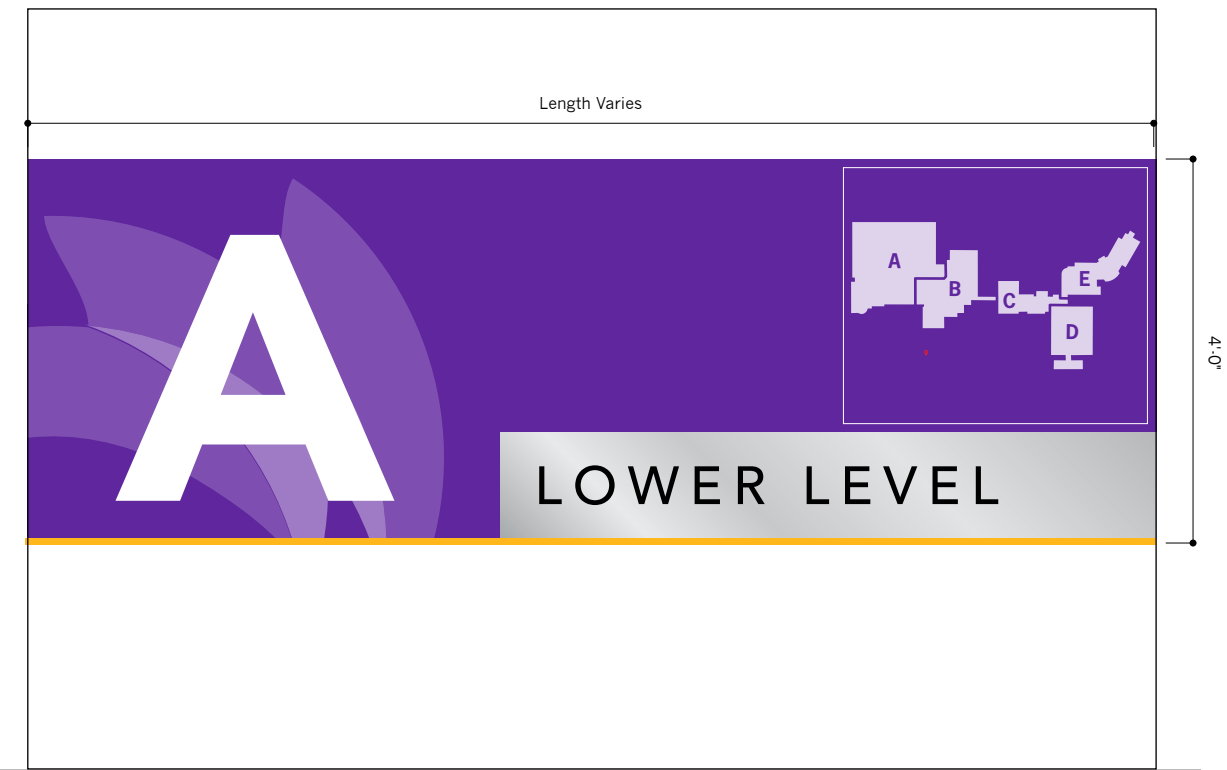
W2.3
Symbols
Flag



W2.3.1
Tornado Shelter
Flag

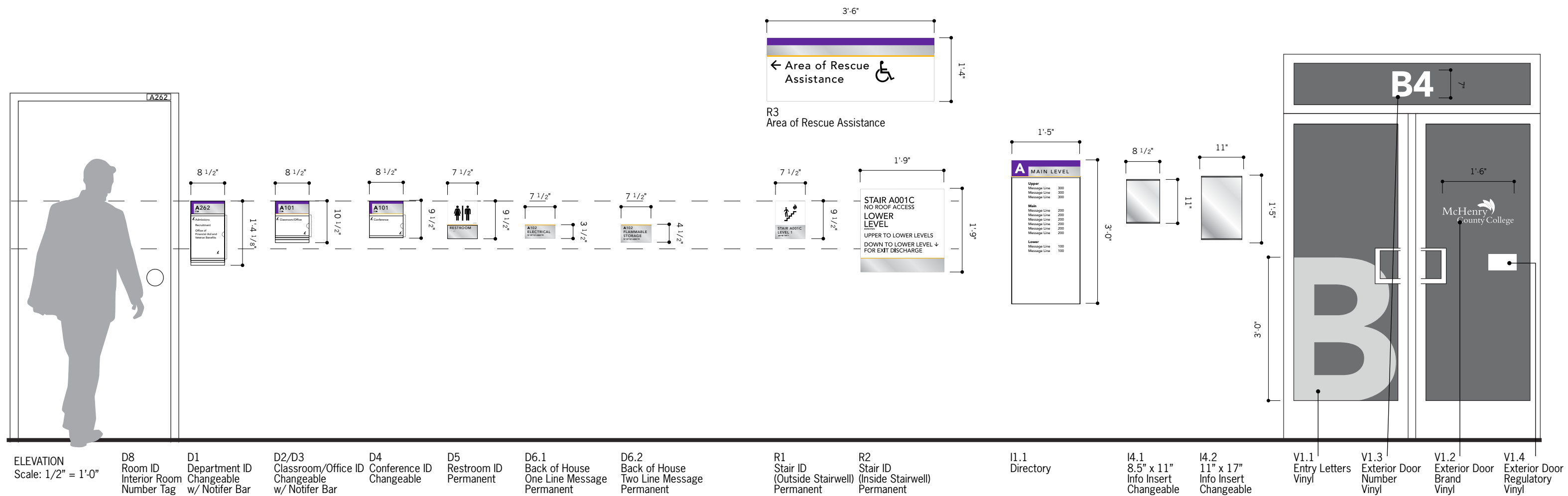


L1.1/L1.2
Primary/Secondary
Identification Letters



B1.1
Building Entry Wall

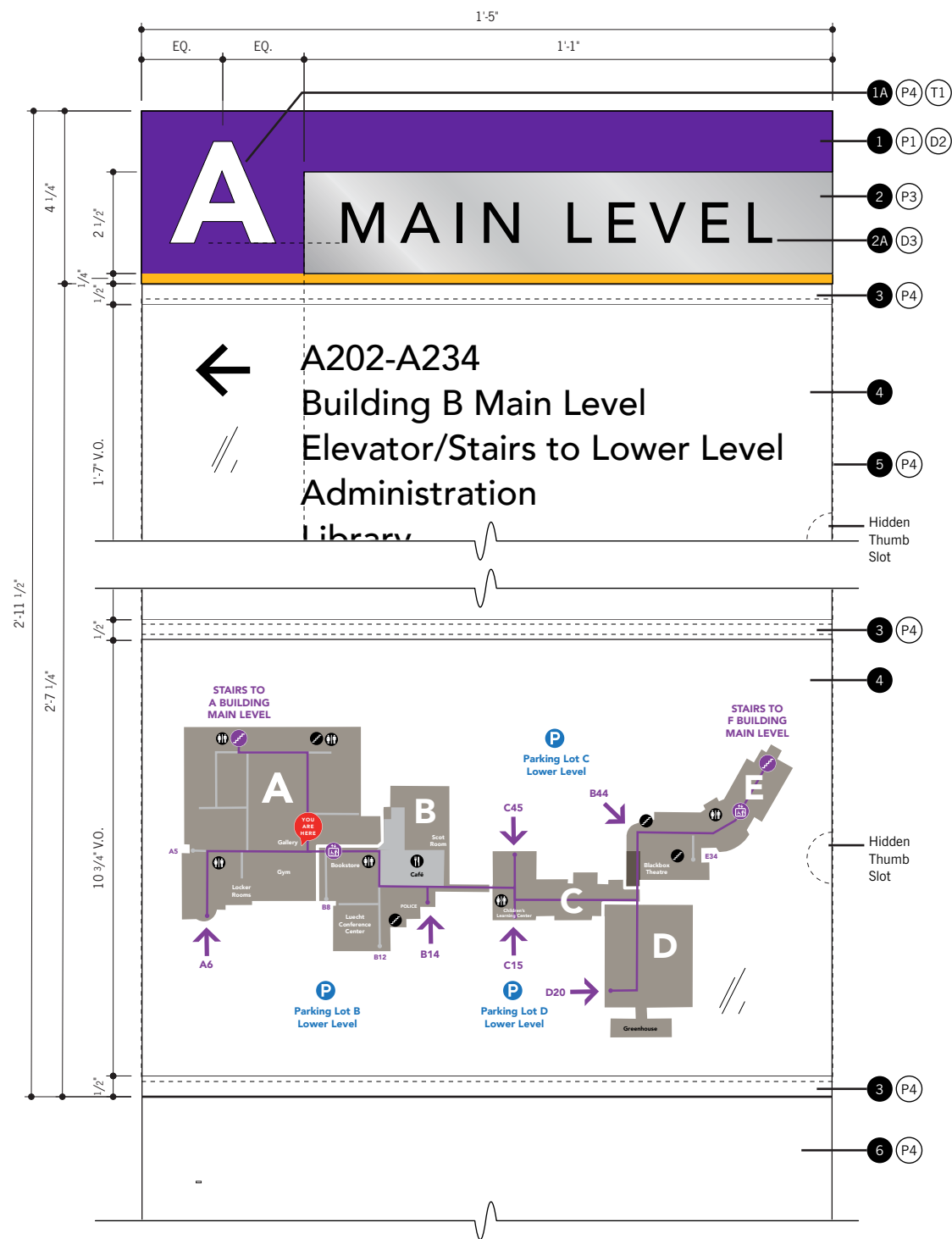
ELEVATION
Scale: 1/2" = 1'-0"



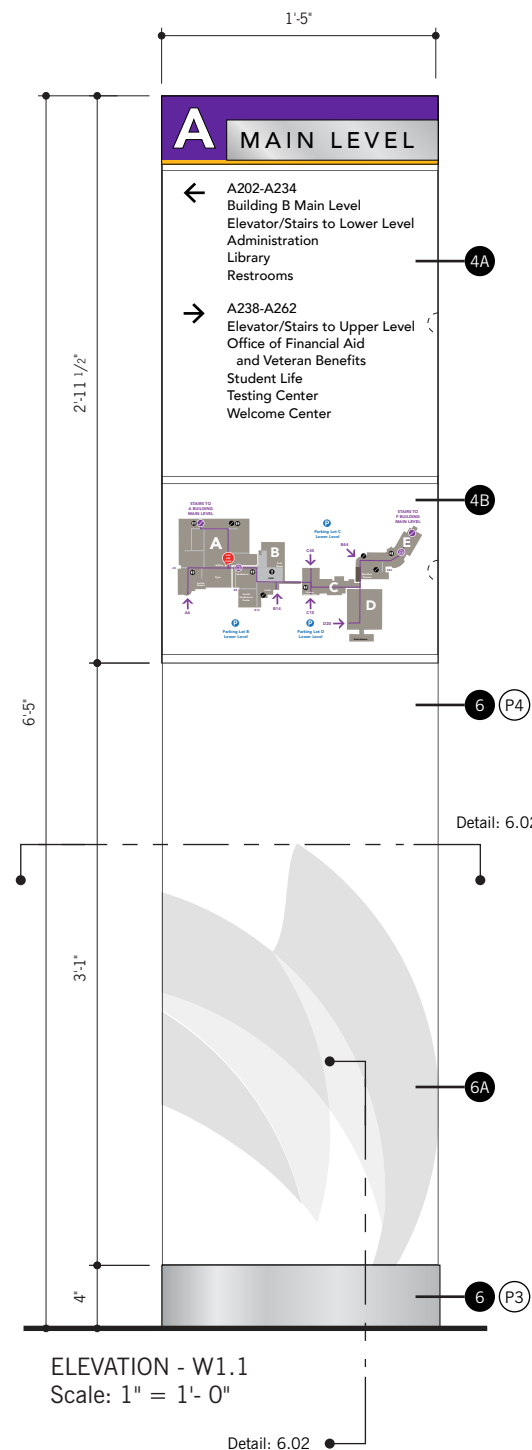
Section 6

Sign Type Drawings

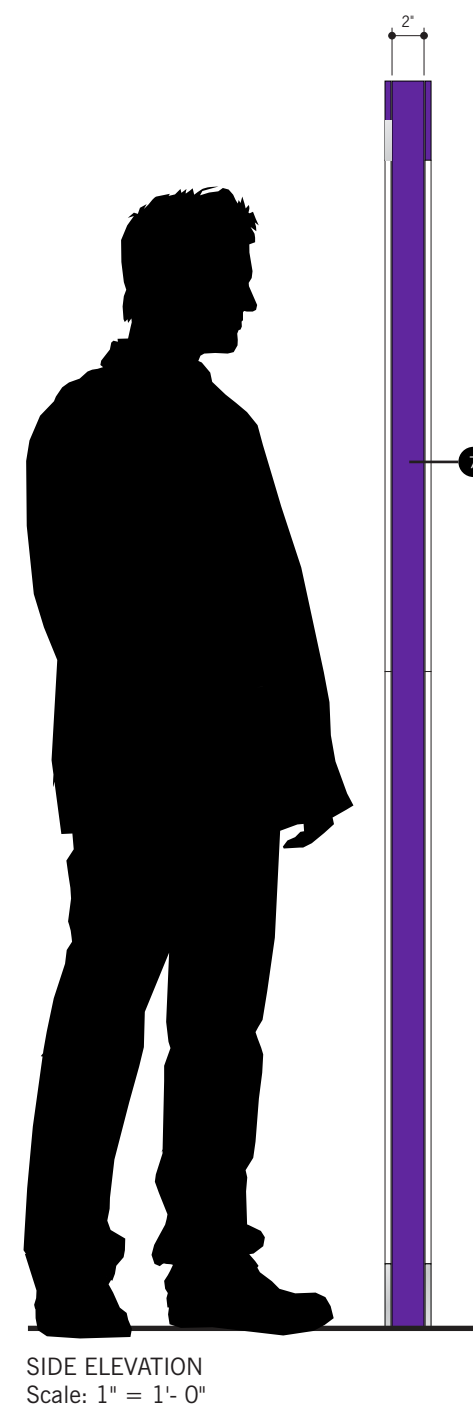
Primary Directional Pylon



DETAIL ELEVATION - W1.1 w/ Typ. Specifications
Scale: 1 1/2" = 1'- 0"



ELEVATION - W1.1
Scale: 1" = 1'- 0"

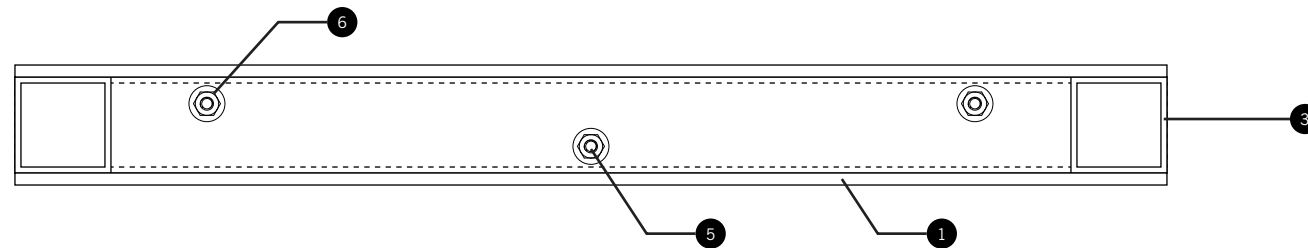


SIDE ELEVATION
Scale: 1" = 1'- 0"

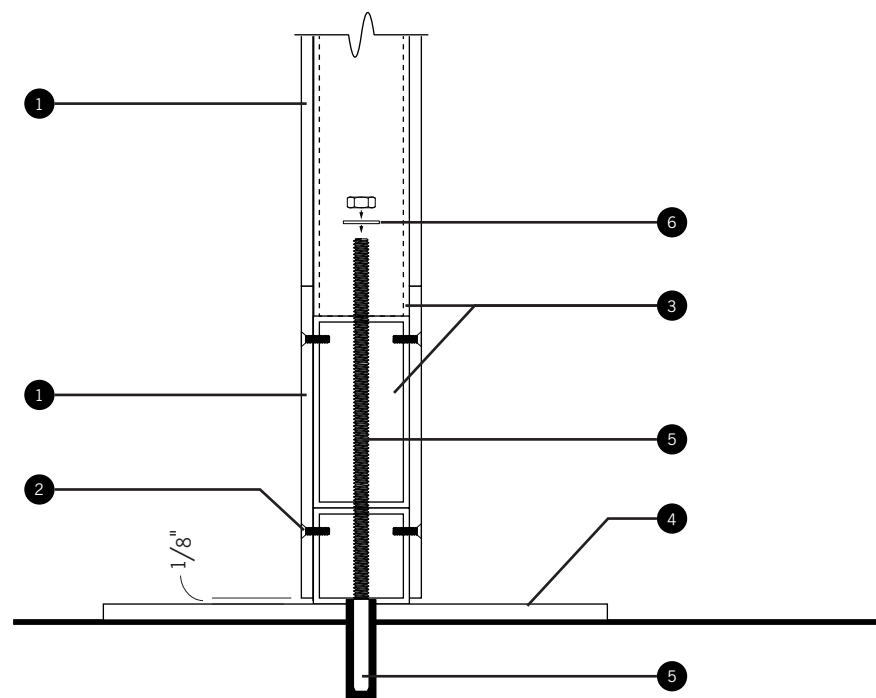
SPECIFICATIONS

- 1 **Header Panel**
Material: 3/16" Thk. Acrylic
Printing: Custom Rule Line - Match D2
Color: Painted - Match P1 - All Surfaces
Mounting: Laminated to Central Support Frame
- 1A **Header Lettering**
Material: 1/16" Laser-Cut + Adhesive-Backed Acrylic
Typeface: T1
Size: 2 1/2" Cap Height
Case: Upper Case Only
Tracking: 0
Mounting: Laminated to Header Panel
- 2 **ID Panel**
Material: 1/16" Thk. Acrylic
Printing: Direct Substrate Printed - Match D3
Color: Painted - Match P3 + Wrap Material Return
Mounting: Laminated to Header Panel
- 2A **ID Lettering**
See Graphic Layout Detail - Sign Type W3.2
- 3 **Paper Insert Lens**
Material: 1/16" Thk. Clear Non-Glare Acrylic
Color: Mask + Spray 2nd Surface Band - Match P4
Mounting: 1/16" D/F Tape Mount to Insert Backer
- 4 **Paper Insert**
Color: A00 White, Per Sign Standard
- 4A **Insert Copy**
See Graphic Layout Detail - Sign Type W3.2
- 4B **Map Insert**
See Graphic Layout Detail - Sign Type W3.1
- 5 **Paper Insert Backer**
Material: 1/16" Thk. Acrylic
Color: Paint P4 - All Surfaces
Mounting: Laminated to Central Support Frame
- 6 **Lower Panel / Base Kick**
Material: 1/4" Thk. P95 Matte Acrylic
Color: Backpaint Paint P4 (Lower) / Surface Paint P3
Laminated to Sign Core
- 6A **Background Logo**
2nd Surface Digitally Printed Logo
Vector Artwork, See Graphic Standards
- 7 **Central Support Frame**
Material: 2" x 2" x 1/8" Alum. Const. Anchored to Floor.
Paint P1 - All Surfaces

Primary Directional Pylon



SECTION - PLAN VIEW - Freestanding Directory
Scale: 3" = 1'- 0"

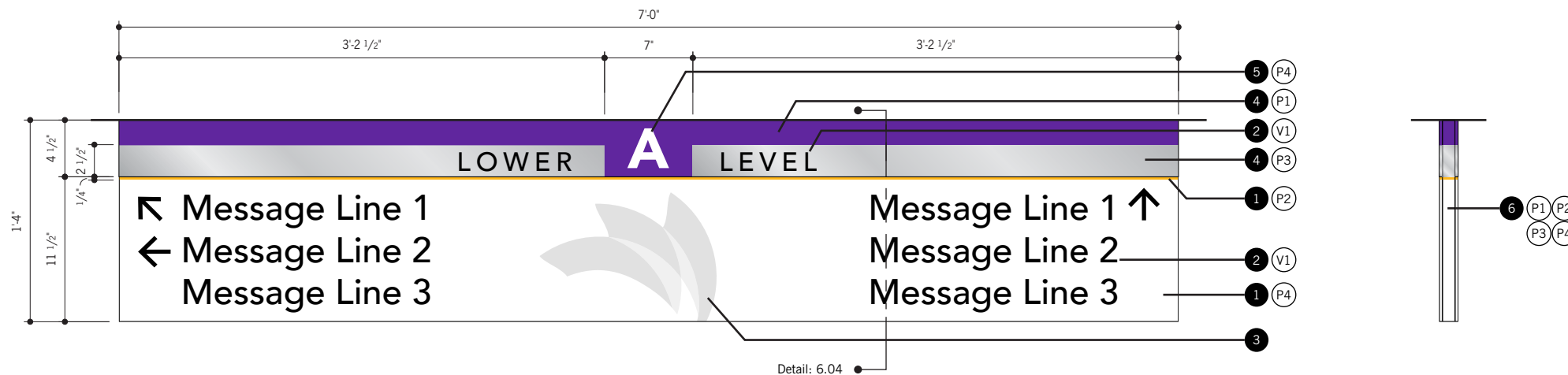


SECTION - SIDE VIEW - Freestanding Directory
Scale: 3" = 1'- 0"

SPECIFICATIONS

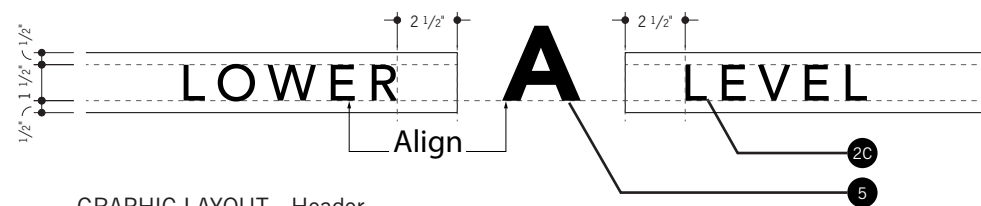
- 1 Lower Panel / Base Kick**
 Material: Acrylic
 Color: Painted Per Detail Elevation
- 2 Fasteners**
 18-8 S.S. Tamper-Resist Flat Head Machine Screw
 Drilled Spanner, 8-32 Thread, 1/2" Length,
 MMC#94063A194. Painted to match Panel
- 3 Sign Frame**
 2" x 2" x 1/8" thk. aluminum tube construction. Butt
 join + weld w/ 2" x 4" tube cross-brace at base. Drill +
 tap #8-32 thread holes at 1st surface for Fasteners to
 secure base kick for access to anchoring. Provide 1/2"
 dia. thru-holes at base for pass-thru of floor and anchor
 rod
- 4 Base Plate**
 10" D x 3/8" thk. Aluminum plate to match OA width of
 Directory w/ concealed mechanical fastener to Sign
 Frame from bottom.
- 5 Floor Anchor**
 Double-expansion anchor for type 316 S.S. threaded
 rod, 3/8"-16 thread, 1' Long, MMC#93250A066.
 3 1/2" (+/-) concrete subfloor embed + 8 1/2" (+/-)
 exposed thread for sign frame mounting
- 6 Nut + Washer (addl. quantities as reqd.)**
 Nut: S.S. 3/8"-16 Thread, 9/16" W, 21/64" H,
 MMC#94804A320,
 Washer: S.S. for 3/8" screw size, .406" ID, .750" OD,
 MMC#90107A127

Primary Directional Overhead

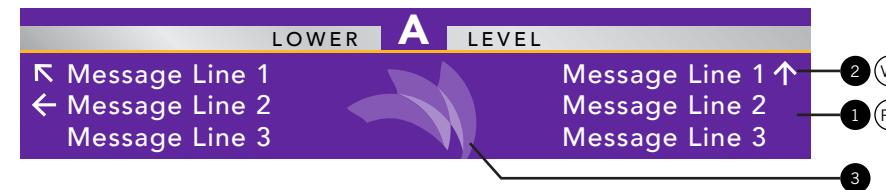


ELEVATION - W2.1 w/ Typical Specifications
Scale: 1" = 1'- 0"

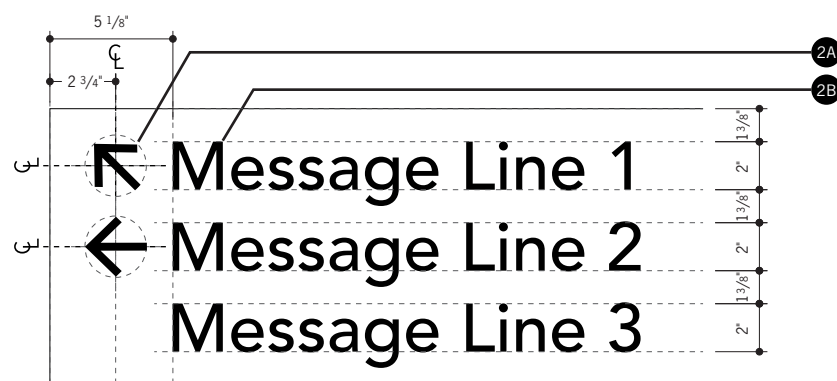
SIDE ELEVATION
Scale: 1" = 1'- 0"



GRAPHIC LAYOUT - Header
Scale: 1 1/2" = 1'- 0"



COLOR VARIANT - For Signs Located on Pathway (See Page 4.06)
Scale: NTS



GRAPHIC LAYOUT (Left Aligned)
Scale: 1 1/2" = 1'- 0"



GRAPHIC LAYOUT (Right Aligned)
Scale: 1 1/2" = 1'- 0"

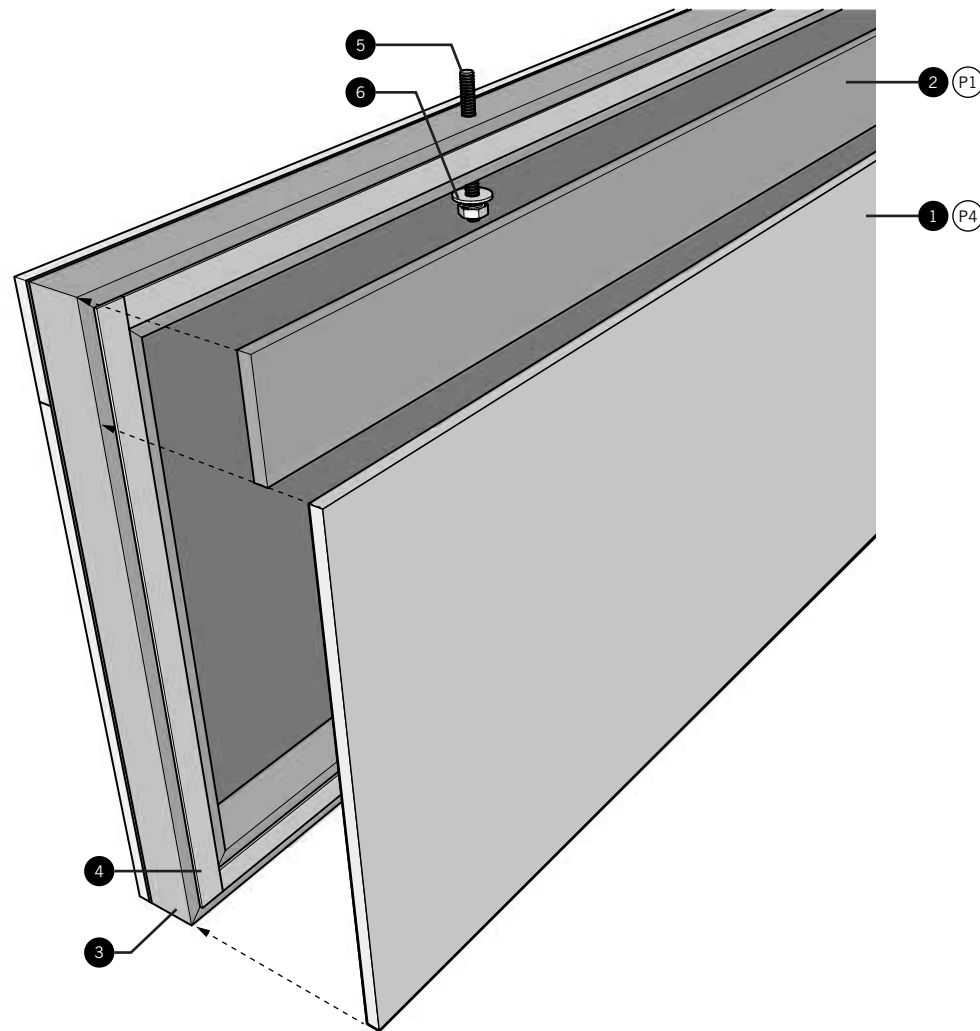
SPECIFICATIONS

- 1 **Sign Face**
Material: 1/4" Thk. P95 Matte Acrylic
Color: Backpainted - Match P4
Rule Line: Mask + Spray 1/4" H - Match P2
Mounting: D/F Tape Mount to Sign Frame
- 2 **Sign Copy**
Cut + Applied Vinyl
Color: Match V1
- 2A **Arrow**
Vector Artwork, See Graphic Standards
Size: 2 1/2" High
- 2B **Typeface: T2**
Size: 2" Cap Height
Case: Upper/Lower
Tracking: 0
- 2C **Typeface: T2**
Size: 1 1/2" Cap Height
Case: Upper Case
Tracking: +200
- 3 **Background Logo**
2nd Surface Digitally Printed Logo
Vector Artwork, See Graphic Standards
Size: 10 1/4" High
- 4 **Header**
Material: 1/4" Thk. Acrylic
Color: Painted - Match P1
Level ID Background: Mask + Spray - Match P3
Mounting: D/F Tape Mount to Sign Frame
- 5 **Header Building ID**
Material: 1/16" Laser-Cut + Adhesive-Backed Acrylic
Typeface: T1
Size: 3 1/8" Cap Height
Case: Upper Case Only
Tracking: 0
Mounting: Laminated to Header Panel
- 6 **Sign Frame**
Material: 1" x 1" Aluminum Tube
Fabrication: Mitre-Cut + Welded Construction
Color: Mask + Spray Per Detail Drawing
Mounting: Flush-Mounted to Ceiling

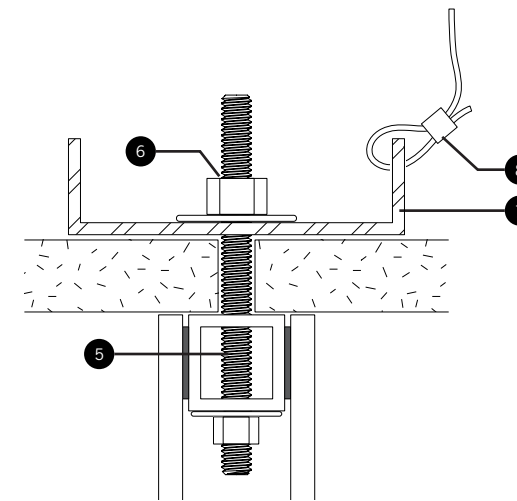
Overhead Construction - Flush Mount

SPECIFICATIONS

- ① **Sign Face**
Material: 1/4" Thk. Acrylic
Color: Backpainted - Match P4
- ② **Header**
Material: 1/4" Thk. Acrylic
Color: Painted - Match P1
- ③ **Sign Frame**
Material: 1" x 1" Aluminum Tube
Fabrication: Mitre-Cut + Welded Construction
Color: Mask + Spray Per Elevation Drawing
- ④ **Sign Face Mounting**
1/2" W x 1/16" thk. VHB Tape
- ⑤ **Suspension Rod**
Material: 1/4"-20 Threaded Rod Support
- ⑥ **Nut + Washer**
1/4"-20 Thread nut + washer
Installed at end of Suspension Rod(s)
Located inside Sign Frame and Above Structural Stud
- ⑦ **Structural Stud**
Installed across ceiling grid
- ⑧ **Structural Anchor**
S.S. Cable anchored to concrete deck above



DETAIL - Exploded View w/ Typical Specifications
Scale: NTS

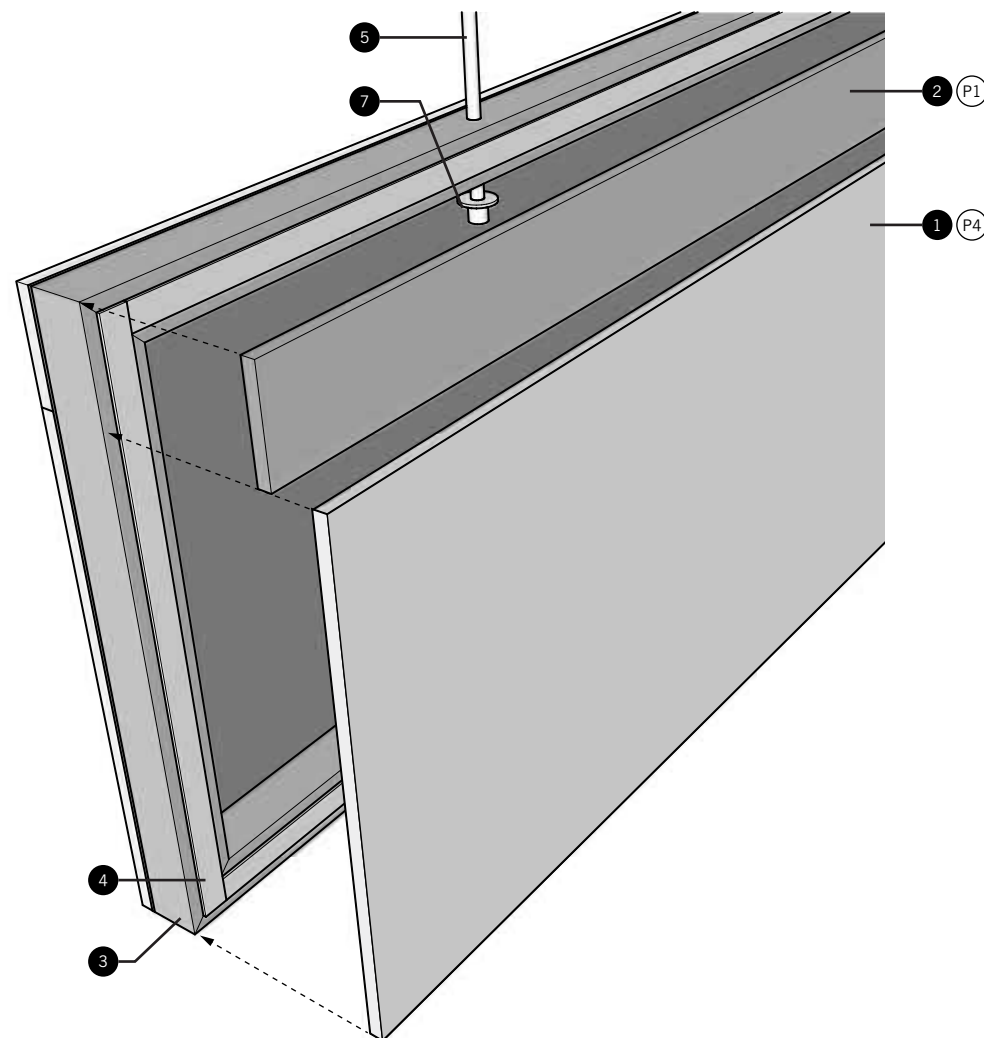


DETAIL - Ceiling Installation w/ Typical Specifications
Scale: 1:2

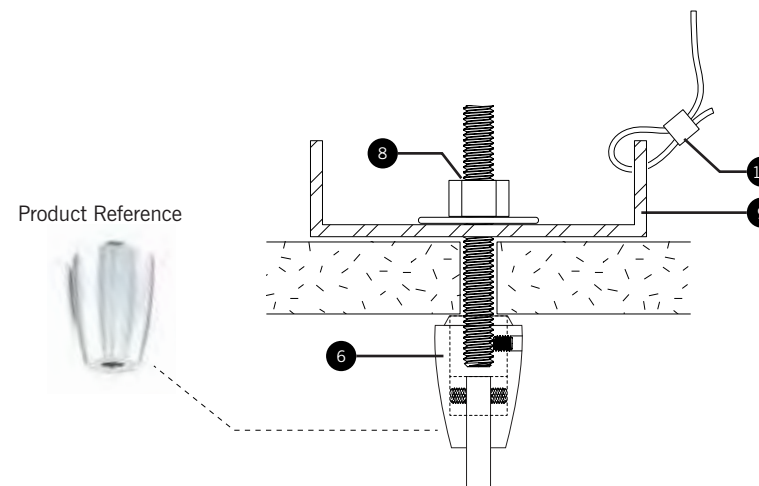
Overhead Construction - Suspended Mount

SPECIFICATIONS

- 1 **Sign Face**
Material: 1/4" Thk. Acrylic
Color: Backpainted - Match P4
- 2 **Header**
Material: 1/4" Thk. Acrylic
Color: Painted - Match P1
- 3 **Sign Frame**
Material: 1" x 1" Aluminum Tube
Fabrication: Mitre-Cut + Welded Construction
Color: Mask + Spray Per Elevation Drawing
- 4 **Sign Face Mounting**
1/2" W x 1/16" thk. VHB Tape
- 5 **Suspension Rod**
Material: 1/4" Dia. Aluminum Rod
Shape: Round
Color: Satin Anodized
- 6 **EZ-ATR-250**
EZ 1/4" Rod Mount - by Gyford
Material: Aluminum
Color: Satin Anodized
- 7 **EZ-ART-250 + Washer**
EZ 1/4" Rod Terminator - by Gyford
Installed at end of Suspension Rod(s)
Located inside Sign Frame
- 8 **Mounting Hardware**
5/16"-18 Thread S.S. Stud w/ nut + washer
to pass through drop ceiling
- 9 **Structural Stud**
Installed across ceiling grid
- 10 **Structural Anchor**
S.S. Cable anchored to concrete deck above

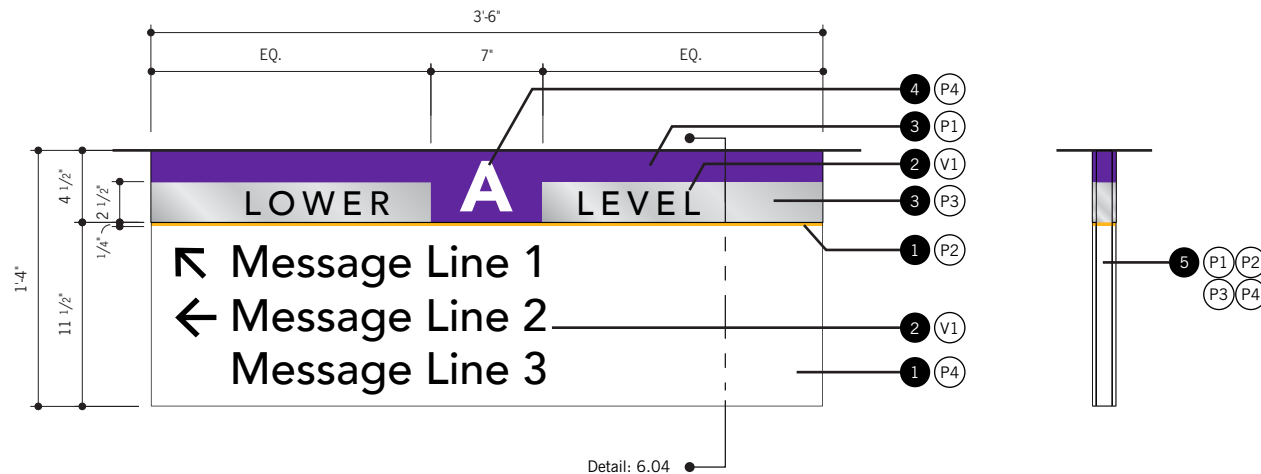


DETAIL - Exploded View w/ Typical Specifications
Scale: NTS



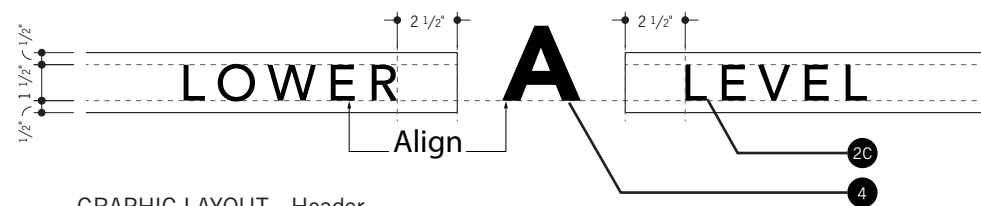
DETAIL - Ceiling Installation w/ Typical Specifications
Scale: 1:2

Secondary Directional Overhead

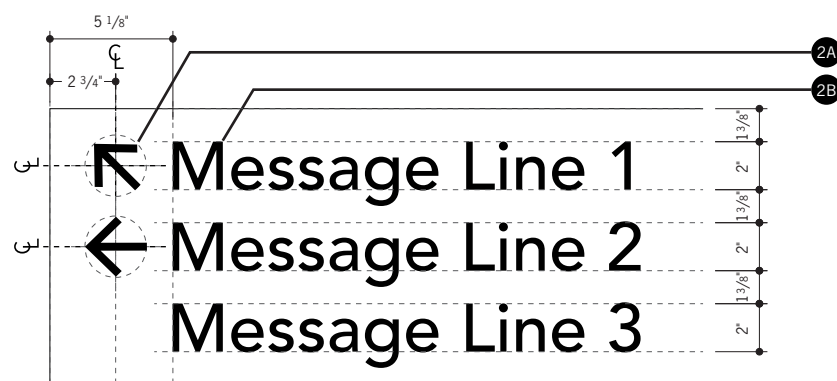


ELEVATION - W2.2 w/ Typical Specifications
Scale: 1" = 1'- 0"

SIDE ELEVATION
Scale: 1" = 1'- 0"



GRAPHIC LAYOUT - Header
Scale: 1 1/2" = 1'- 0"



GRAPHIC LAYOUT (Left Aligned)
Scale: 1 1/2" = 1'- 0"



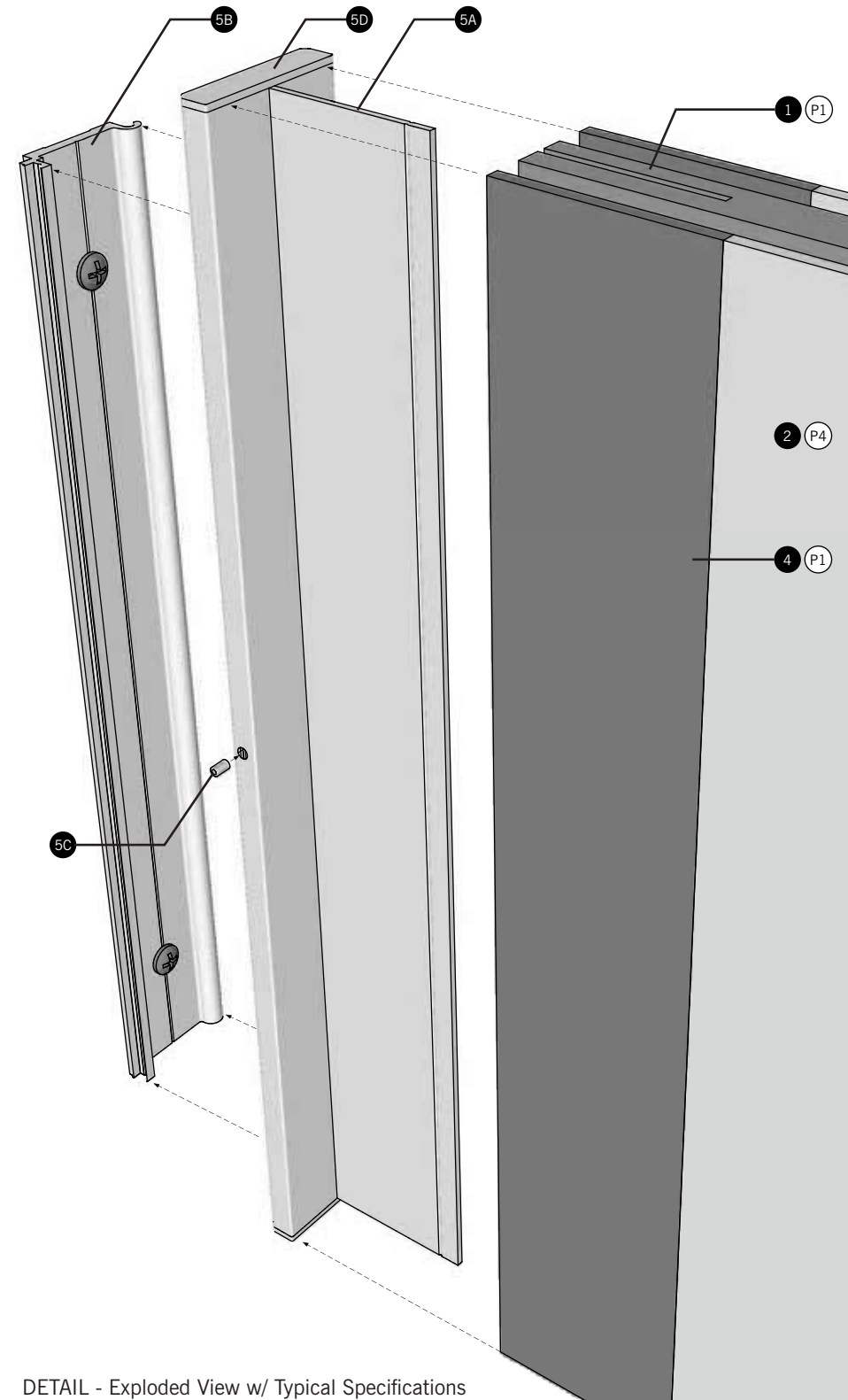
GRAPHIC LAYOUT (Right Aligned)
Scale: 1 1/2" = 1'- 0"

SPECIFICATIONS

- 1 **Sign Face**
Material: 1/4" Thk. P95 Matte Acrylic
Color: Backpainted - Match P4
Rule Line: Mask + Spray 1/4" H - Match P2
Mounting: D/F Tape Mount to Sign Frame
- 2 **Sign Copy**
Cut + Applied Vinyl
Color: Match V1
- 2A **Arrow**
Vector Artwork, See Graphic Standards
Size: 2 1/2" High
- 2B **Typeface: T2**
Size: 2" Cap Height
Case: Upper/Lower
Tracking: 0
- 2C **Typeface: T2**
Size: 1 1/2" Cap Height
Case: Upper Case
Tracking: +200
- 3 **Header**
Material: 1/4" Thk. Acrylic
Color: Painted - Match P1
Level ID Background: Mask + Spray - Match P3
Mounting: D/F Tape Mount to Sign Frame
- 4 **Header Building ID**
Material: 1/16" Laser-Cut + Adhesive-Backed Acrylic
Typeface: T1
Size: 3 1/8" Cap Height
Case: Upper Case Only
Tracking: 0
Mounting: Laminated to Header Panel
- 5 **Sign Frame**
Material: 1" x 1" Aluminum Tube
Fabrication: Mitre-Cut + Welded Construction
Color: Mask + Spray Per Detail Drawing
Mounting: Flush-Mounted to Ceiling

SPECIFICATIONS

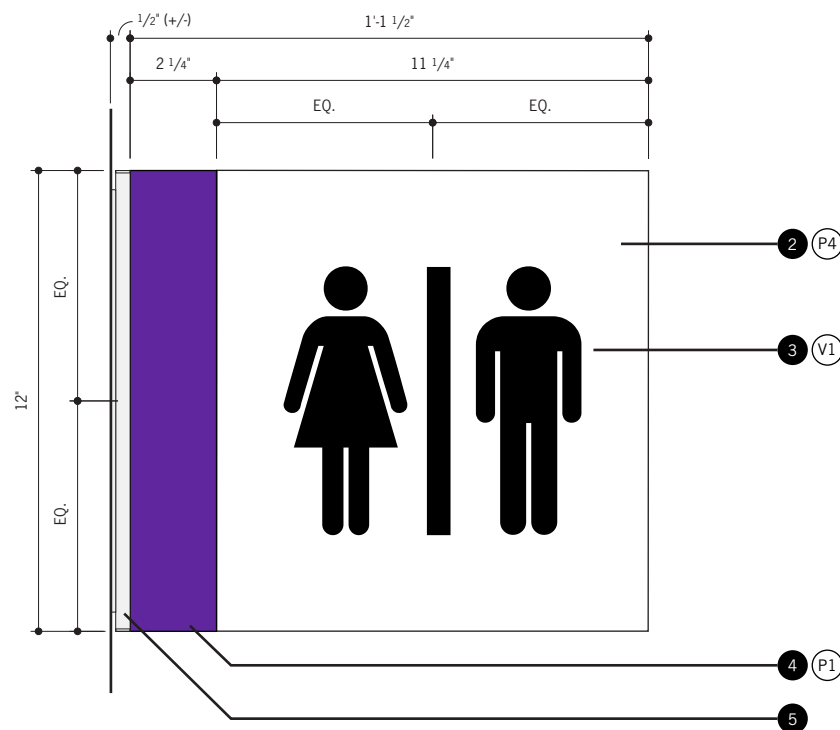
- 1 **Sign Core**
1/2" thk. Acrylic w/ Routed Slot at rear
Color: Paint P1
- 2 **Sign Face**
Material: Rectangle, 1/8" Thk. P95 Matte Acrylic
Color: Backpainted Paint P4
1/16" VHB Mount to Sign Core
- 3 **Symbol**
Vector Artwork - See Graphic Standards
7" High (Typ.) Cut + Applied Vinyl
Color: Match V1
- 4 **Sign Accent**
Material: Rectangle, 1/8" Acrylic
Color: Paint P1 - All Surfaces
1/16" VHB Mount to Sign Core
- 5 **CMT-M**
2-Part Extruded Aluminum Track - by APCO
Color: Natural Satin, Per Sign Standard
- 5A "T" Bracket
Extruded Aluminum - by APCO
- 5B Wall Bracket
Extruded Aluminum - by APCO
Mechanically fasten to Wall Surface w/
appropriate anchor
- 5C Set Screw
Spacing + Qty. as required, to secure Brackets
- 5D Inset Cap for "T" Bracket Extrusion
Molded Nylon - by APCO



DETAIL - Exploded View w/ Typical Specifications
Scale: NTS



ELEVATION - Plan View
Scale: 1:5



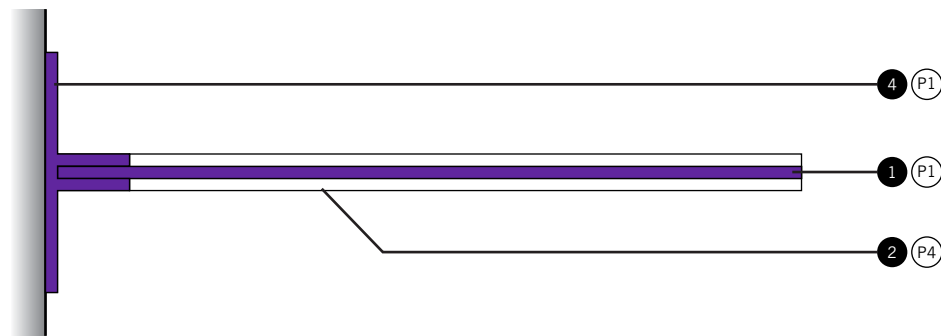
ELEVATION - W2.3 w/ Typical Specifications
Scale: 1:5



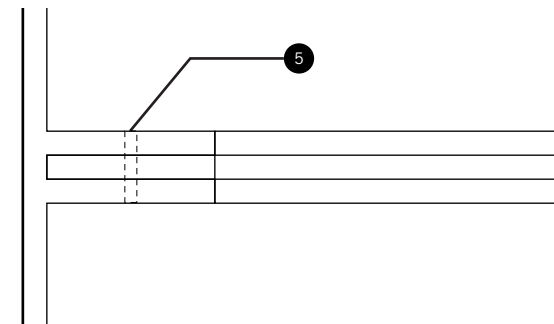
W2.3 - Graphic Variants

SPECIFICATIONS

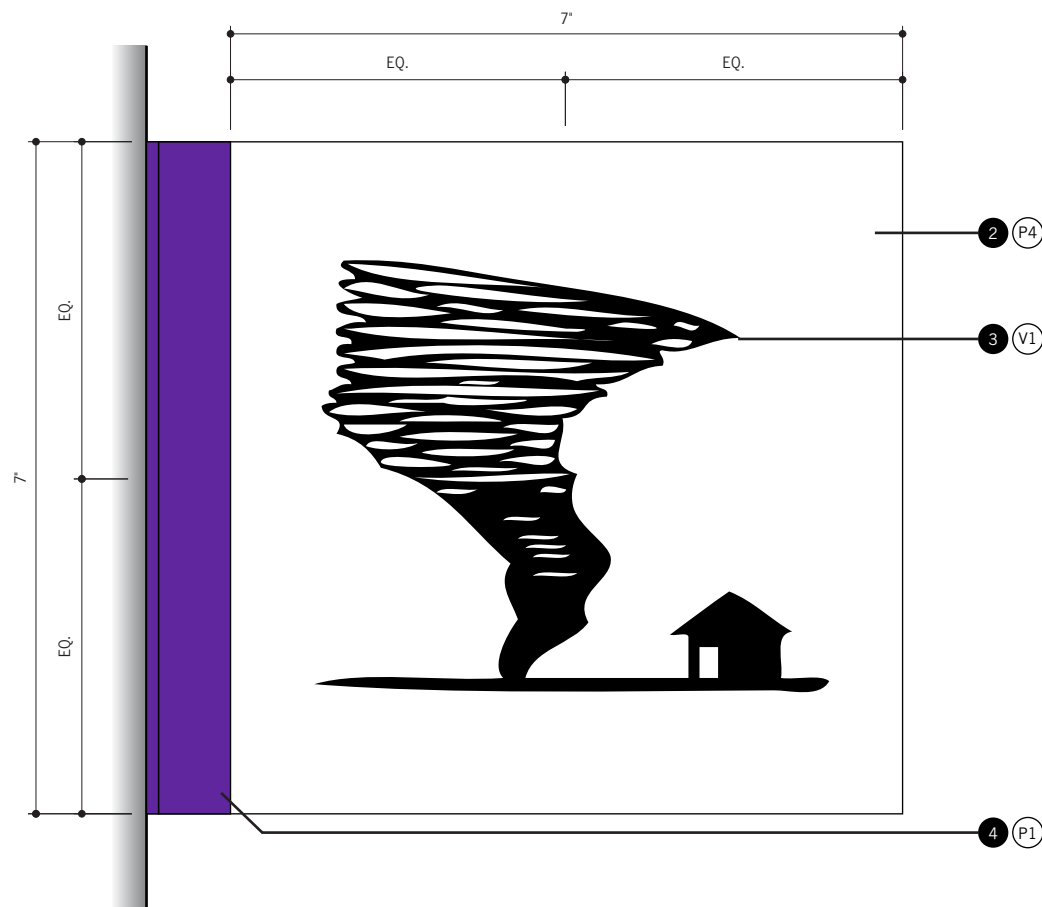
- 1 **Sign Core**
1/8" thk. Acrylic
Color: Paint P1 - All Surfaces
- 2 **Sign Face**
Material: Rectangle, 1/8" Thk. P95 Matte Acrylic
Color: Backpainted Paint P4
Laminated to Sign Core
- 3 **Symbol**
Vector Artwork - See Graphic Standards
4 1/2" High (Typ.) Cut + Applied Vinyl
Color: Match V1
- 4 **T-Bracket Extrusion**
2 1/2" Wide at Base, secured to Wall Surface
w/ appropriate fastener
Paint P1 - All Surfaces
- 5 **Set Screw**
To secure Sign Core to T-Bracket



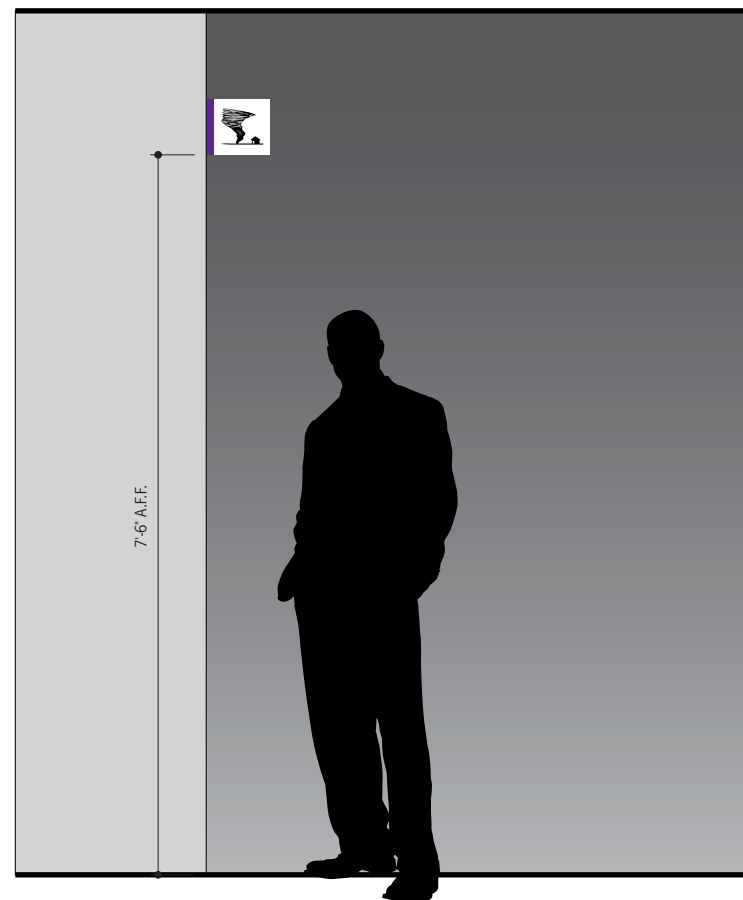
ELEVATION - Plan View
Scale: 1:2



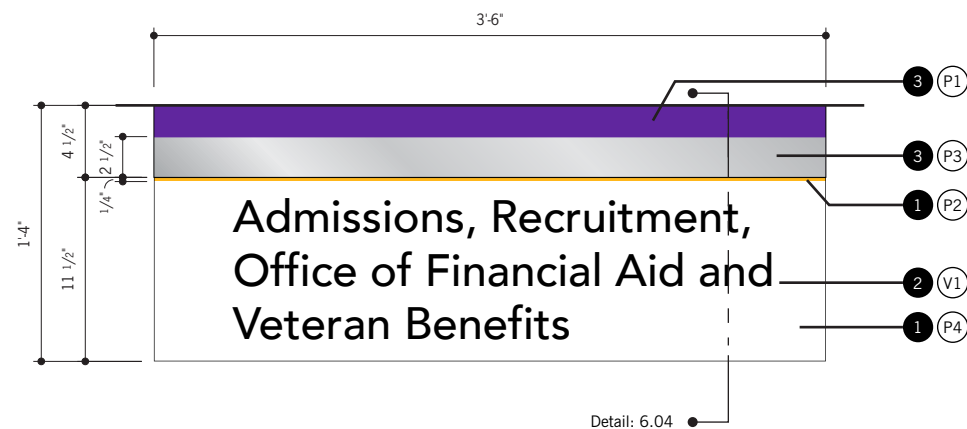
DETAIL - Plan View
Scale: 1:1



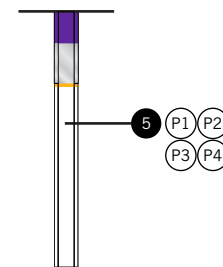
ELEVATION - W2.3.1 w/ Typical Specifications
Scale: 1:2



MOUNTING DETAIL - Typical
Scale: 1/2" = 1'-0"



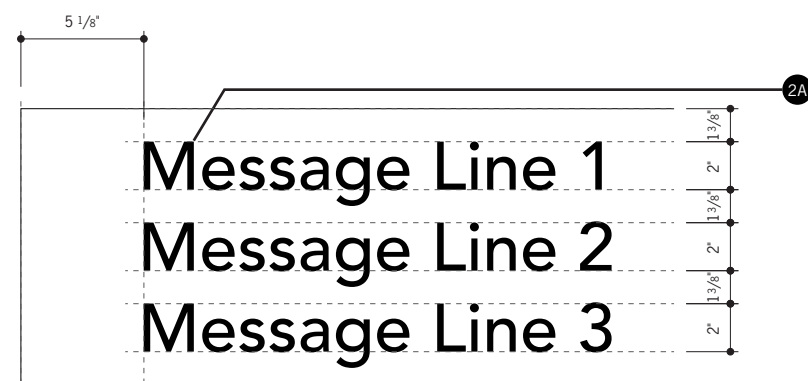
ELEVATION - W2.4 w/ Typical Specifications
Scale: 1" = 1'- 0"



SIDE ELEVATION
Scale: 1" = 1'- 0"

SPECIFICATIONS

- 1 **Sign Face**
Material: 1/4" Thk. P95 Matte Acrylic
Color: Backpainted - Match P4
Rule Line: Mask + Spray 1/4" H - Match P2
Mounting: D/F Tape Mount to Sign Frame
- 2 **Sign Copy**
Cut + Applied Vinyl
Color: Match V1
- 2A Typeface: T2
Size: 2" Cap Height
Case: Upper/Lower
Tracking: 0
- 3 **Header**
Material: 1/4" Thk. Acrylic
Color: Painted - Match P1
Level ID Background: Mask + Spray - Match P3
Mounting: D/F Tape Mount to Sign Frame
- 4 **Header Building ID**
Material: 1/16" Laser-Cut + Adhesive-Backed Acrylic
Typeface: T1
Size: 3 1/8" Cap Height
Case: Upper Case Only
Tracking: 0
Mounting: Laminated to Header Panel
- 5 **Sign Frame**
Material: 1" x 1" Aluminum Tube
Fabrication: Mitre-Cut + Welded Construction
Color: Mask + Spray Per Detail Drawing
Mounting: Flush-Mounted to Ceiling

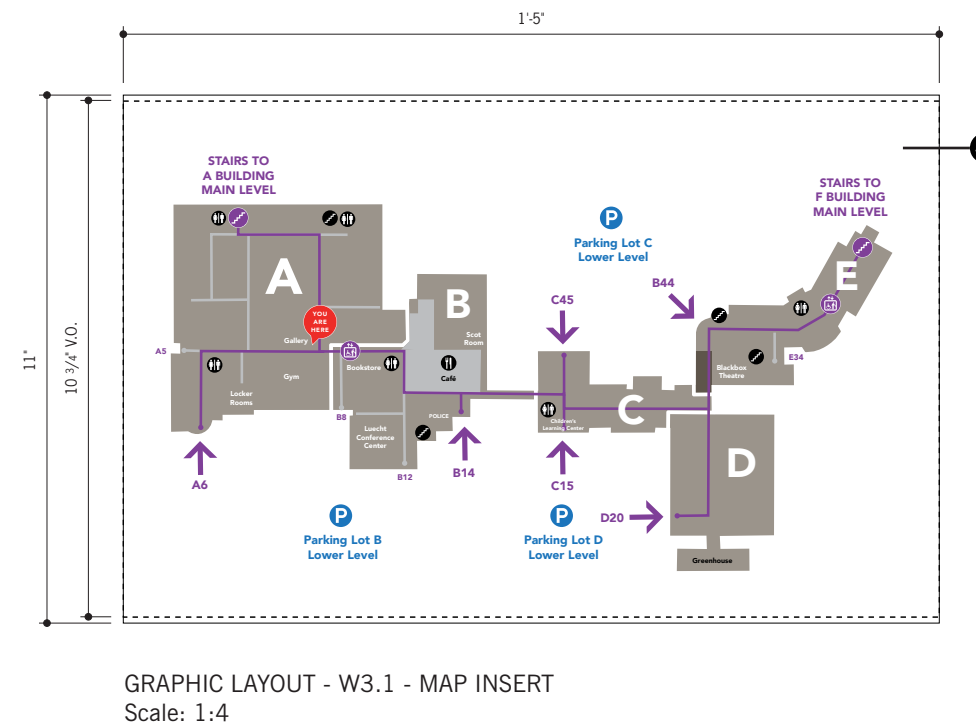
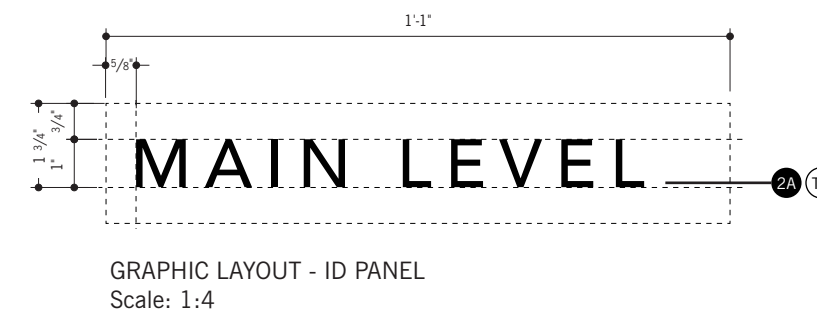
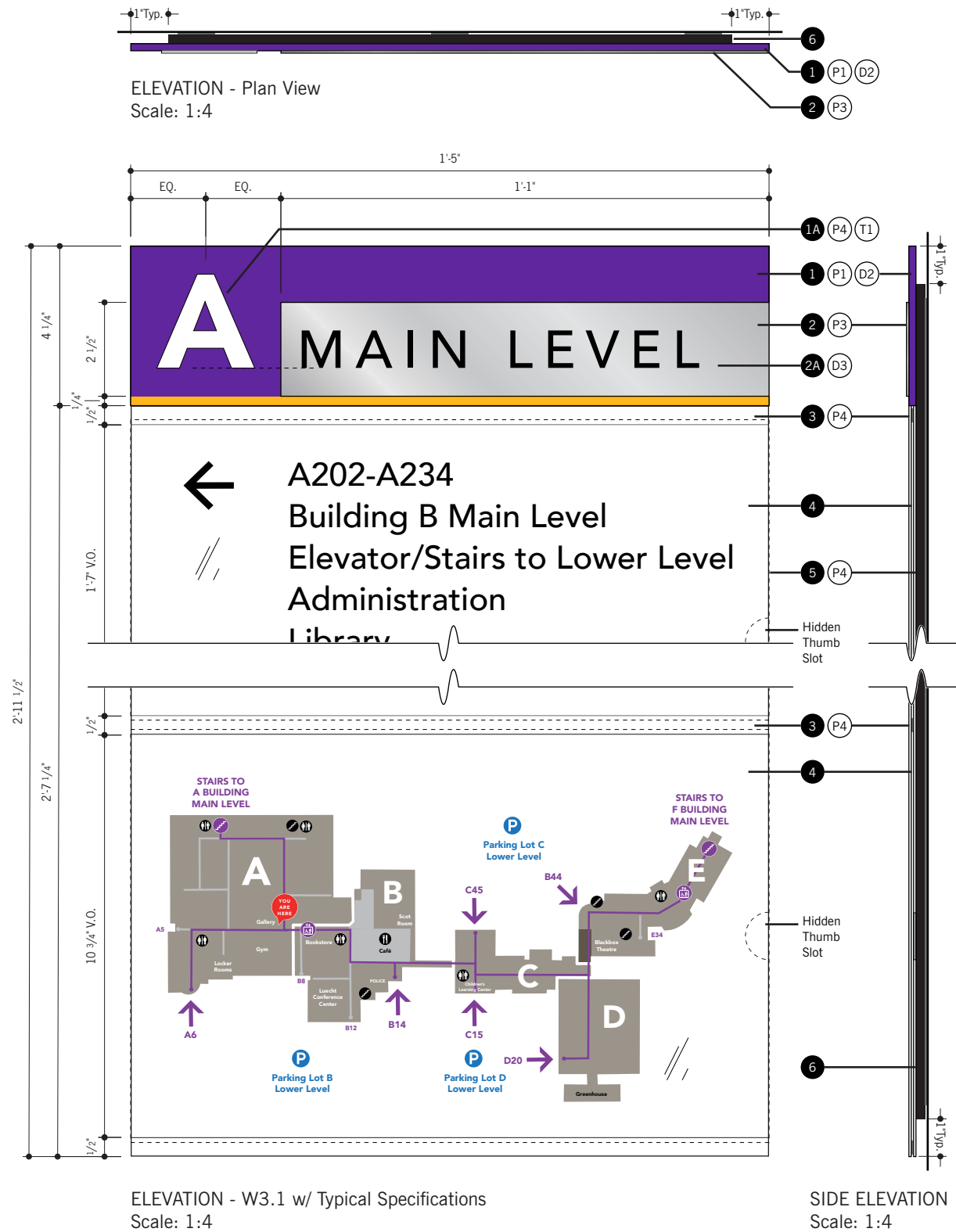


GRAPHIC LAYOUT (Left Aligned)
Scale: 1 1/2" = 1'- 0"



GRAPHIC LAYOUT (Right Aligned)
Scale: 1 1/2" = 1'- 0"

Primary Directional with Map



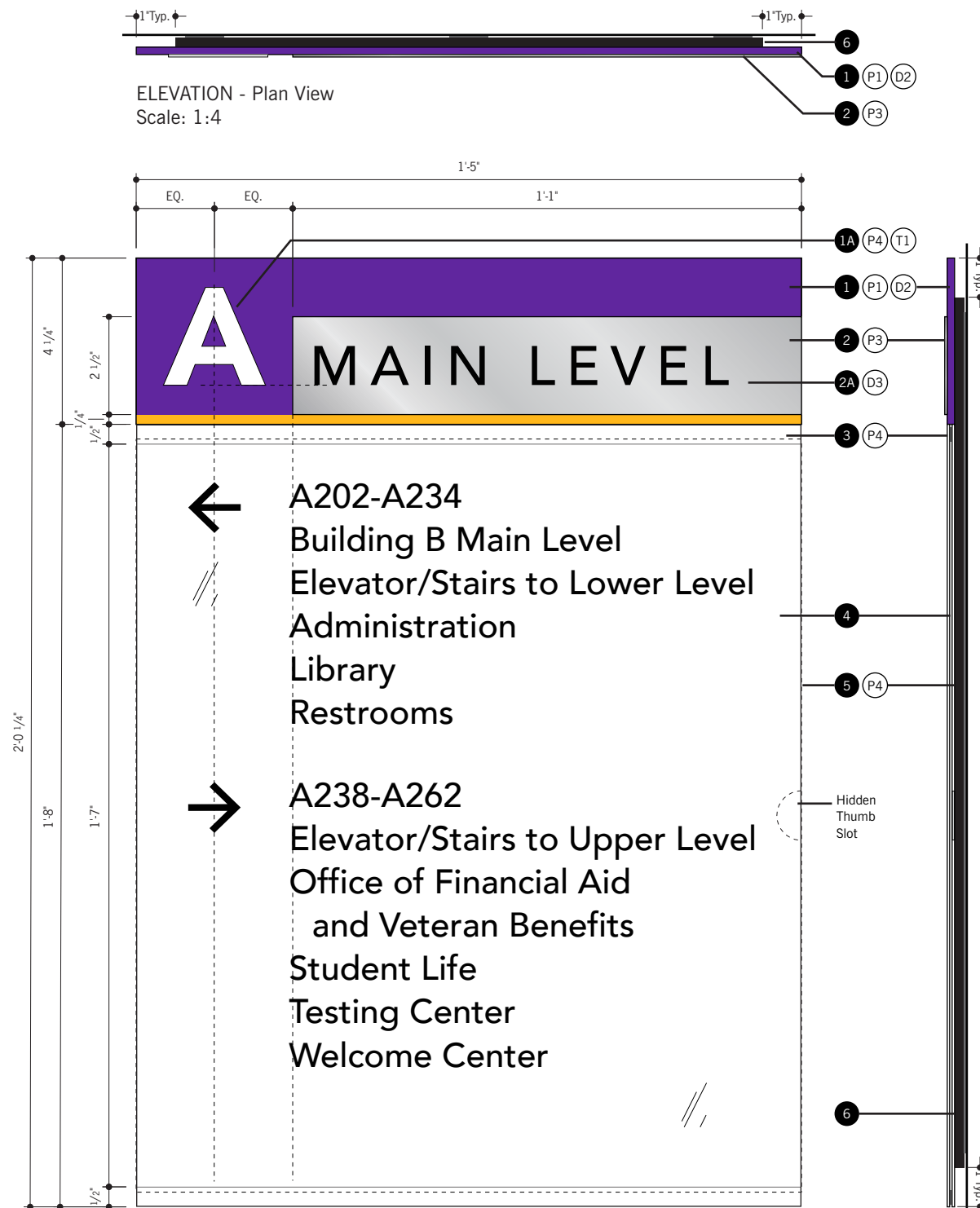
SPECIFICATIONS

- 1 Header Panel**
 Material: 3/16" Thk. Acrylic
 Printing: Custom Rule Line - Match D2
 Color: Painted - Match P1
 Mounting: Secure to Back Plate w/ removable fasteners
- 1A Header Lettering**
 Material: 1/16" Laser-Cut + Adhesive-Backed Acrylic
 Typeface: T1
 Size: 2 1/2" Cap Height
 Case: Upper Case Only
 Tracking: 0
 Mounting: Laminated to Header Panel
- 2 ID Panel**
 Material: 1/16" Thk. Acrylic
 Printing: Direct Substrate Printed - Match D3
 Color: Painted - Match P3
 Mounting: Laminated to Header Panel
- 2A ID Lettering**
 Typeface: T2
 Size: 1" Cap Height
 Case: Upper Case Only
 Tracking: +200
- 3 Paper Insert Lens**
 Material: 1/16" Thk. Clear Non-Glare Acrylic
 Color: Mask + Spray 2nd Surface Band - Match P4
 Mounting: 1/16" D/F Tape Mount to Insert Backer
- 4 Paper Insert**
 Color: A00 White, Per Sign Standard
- 4A Insert Copy**
 See Graphic Layout Detail - Sign Type W3.2
- 4B Map Insert**
 Vector Artwork - By Designer
 Full Color Laser Printed Insert
- 5 Paper Insert Backer**
 Material: 1/16" Thk. Acrylic
 Color: Paint P4 - All Surfaces
 Mounting: Laminated to Back Plate
- 6 Back Plate**
 Material: 1/4" Thk. #2025 Opaque Black Acrylic
 Mounting: Concealed Mechanical Fasteners to Wall

Secondary Directional - Wall Mount

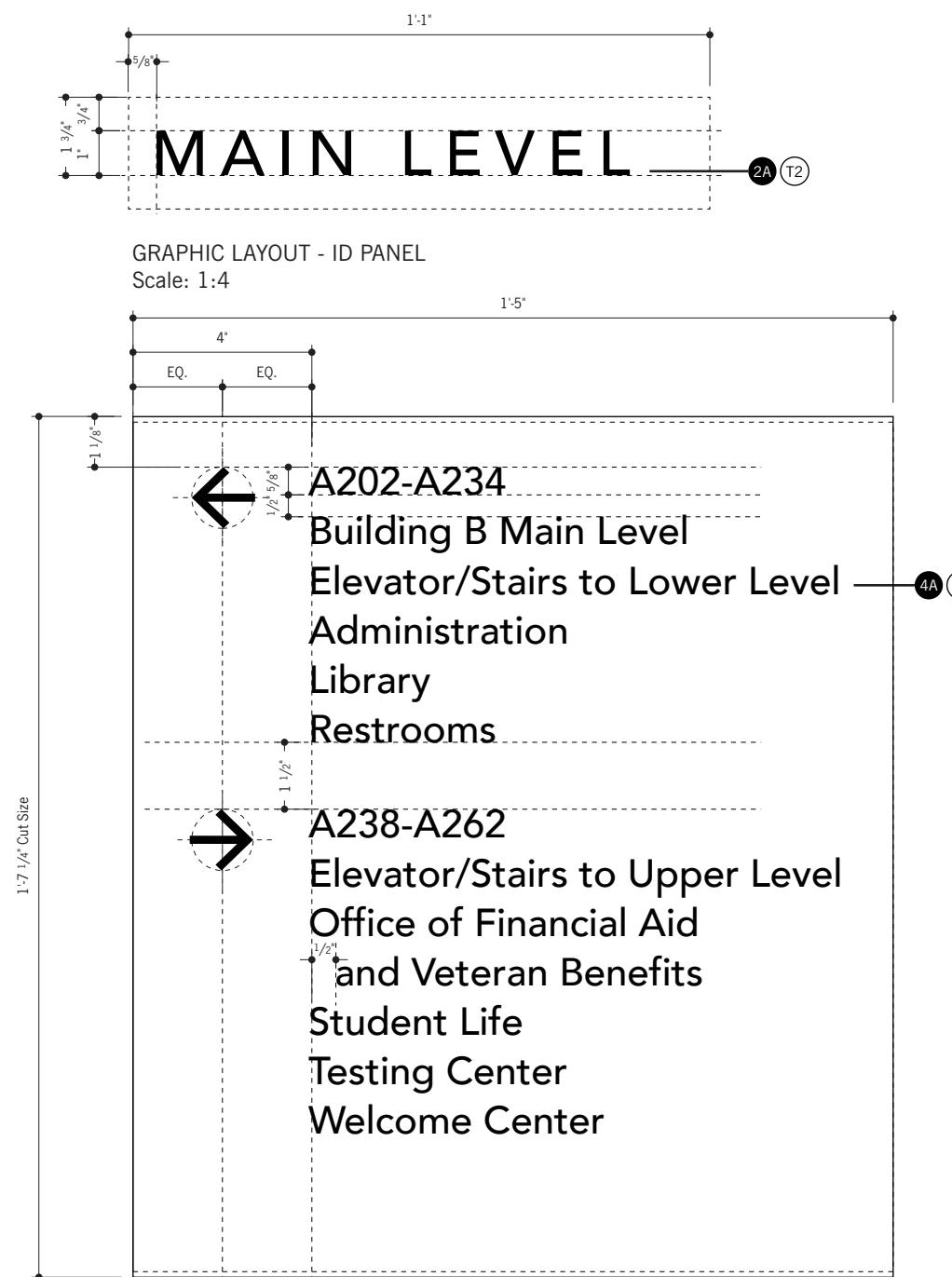
SPECIFICATIONS

- 1 Header Panel**
Material: 3/16" Thk. Acrylic
Printing: Custom Rule Line - Match D2
Color: Painted - Match P1
Mounting: Secure to Back Plate w/ removable fasteners
- 1A Header Lettering**
Material: 1/16" Laser-Cut + Adhesive-Backed Acrylic
Typeface: T1
Size: 2 1/2" Cap Height
Case: Upper Case Only
Tracking: 0
Mounting: Laminated to Header Panel
- 2 ID Panel**
Material: 1/16" Thk. Acrylic
Printing: Direct Substrate Printed - Match D3
Color: Painted - Match P3
Mounting: Laminated to Header Panel
- 2A ID Lettering**
Typeface: T2
Size: 1" Cap Height
Case: Upper Case Only
Tracking: +200
- 3 Paper Insert Lens**
Material: 1/16" Thk. Clear Non-Glare Acrylic
Color: Mask + Spray 2nd Surface Band - Match P4
Mounting: 1/16" D/F Tape Mount to Insert Backer
- 4 Paper Insert**
Color: A00 White, Per Sign Standard
- 4A Insert Copy**
Laser Printed Graphics - See Graphic Layouts
Color: S1
Typeface: T2
Size: 5/8" Cap Height
Case: Upper/Lower
Tracking: 0
- 5 Paper Insert Backer**
Material: 1/16" Thk. Acrylic
Color: Paint P4 - All Surfaces
Mounting: Laminated to Back Plate
- 6 Back Plate**
Material: 1/4" Thk. #2025 Opaque Black Acrylic
Mounting: Concealed Mechanical Fasteners to Wall



ELEVATION - W3.2 w/ Typical Specifications
Scale: 1:4

SIDE ELEVATION
Scale: 1:4

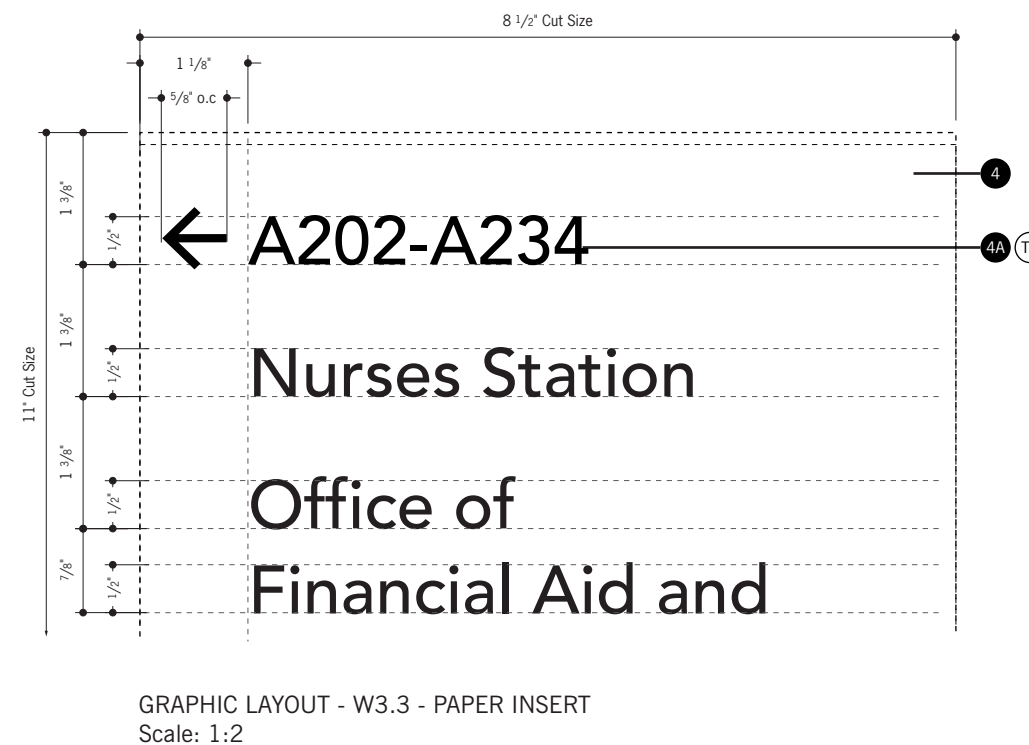
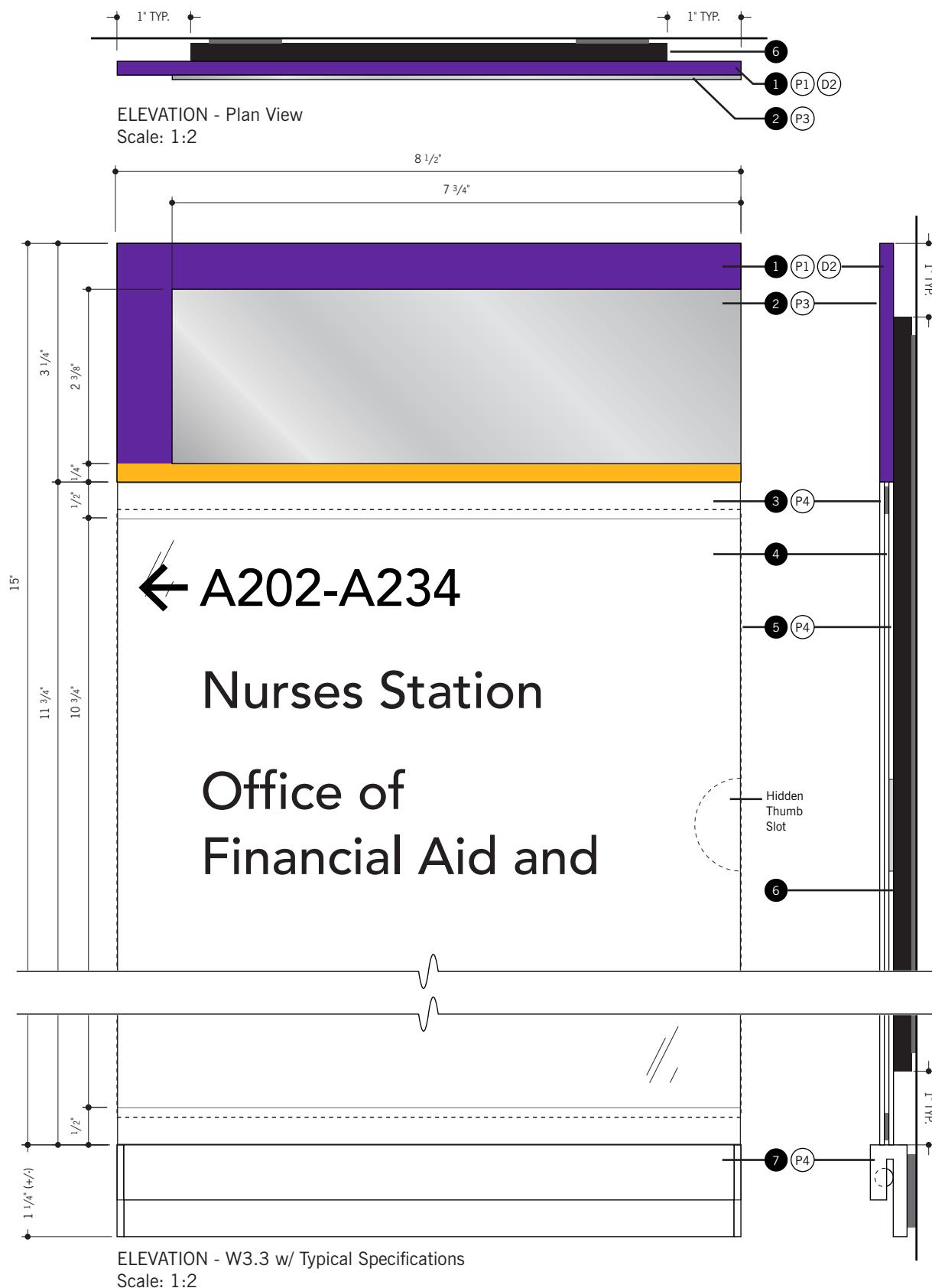


GRAPHIC LAYOUT - W3.2 - PAPER INSERT
Scale: 1:4

Tertiary Directional - Wall Mount

SPECIFICATIONS

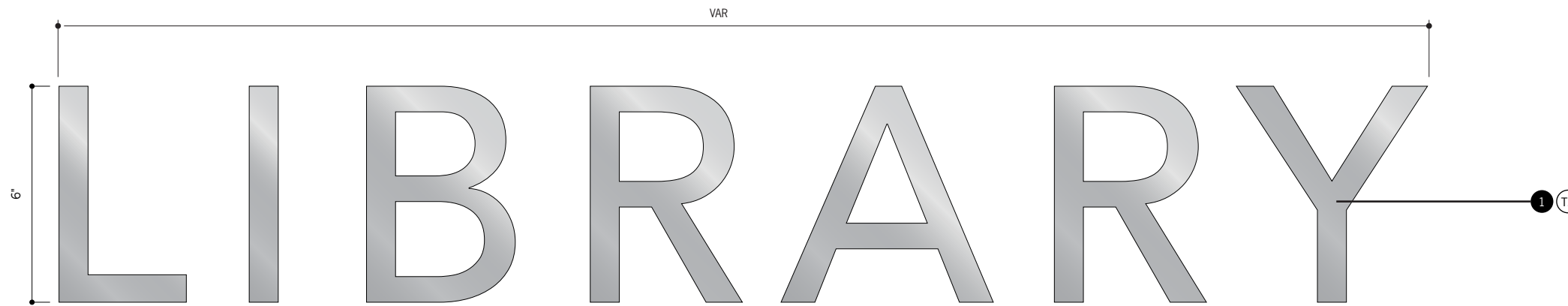
- 1 **Header Panel**
Material: 3/16" Thk. Acrylic
Printing: Custom Rule Line - Match D2
Color: Painted - Match P1
Mounting: Secure to Back Plate w/ removable fasteners
- 2 **ADA Panel**
Material: 1/16" Thk. Photopolymer
Color: Painted - Match P3
Mounting: Laminated to Header Panel
- 3 **Paper Insert Lens**
Material: 1/16" Thk. Clear Non-Glare Acrylic
Color: Mask + Spray 2nd Surface Band - Match P4
Mounting: 1/16" D/F Tape Mount to Insert Backer
- 4 **Paper Insert**
Color: A00 White, Per Sign Standard
- 4A **Insert Copy**
Laser Printed Graphics - See Graphic Layouts
Color: S1
Typeface: T2
Size: 1/2" Cap Height
Case: Upper/Lower
Tracking: 0
- 5 **Paper Insert Backer**
Material: 1/16" Thk. Acrylic
Color: Paint P4 - All Surfaces
Mounting: Laminated to Back Plate
- 6 **Back Plate**
Material: 1/4" Thk. #2025 Opaque Black Acrylic
Mounting: Concealed Mechanical Fasteners to Wall
- 7 **Paper Holder**
Product: NMS Notifier - by APCO
Color: Paint P4 - All Surfaces
Mounting: 1/8" VHB Tape to Wall Surface as reqd.



Primary / Secondary - Identification Lettering

SPECIFICATIONS

- 1 **Aluminum Lettering**
3/8" thk. Flat Cut Aluminum
Finish Face: Directional Textured Fine Satin
Horizontal Grain
Finish Sides: Non Directional Medium Matte
(Sandblasted)
Typeface: T2 Tracking: +75
Applied to first surface with 1/32" vhb tape.



L1.1 Primary Identification Letters
ELEVATION Scale: 3"=1'-0"

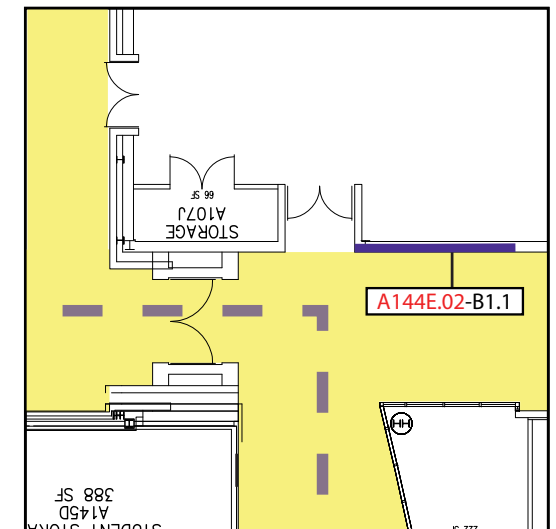
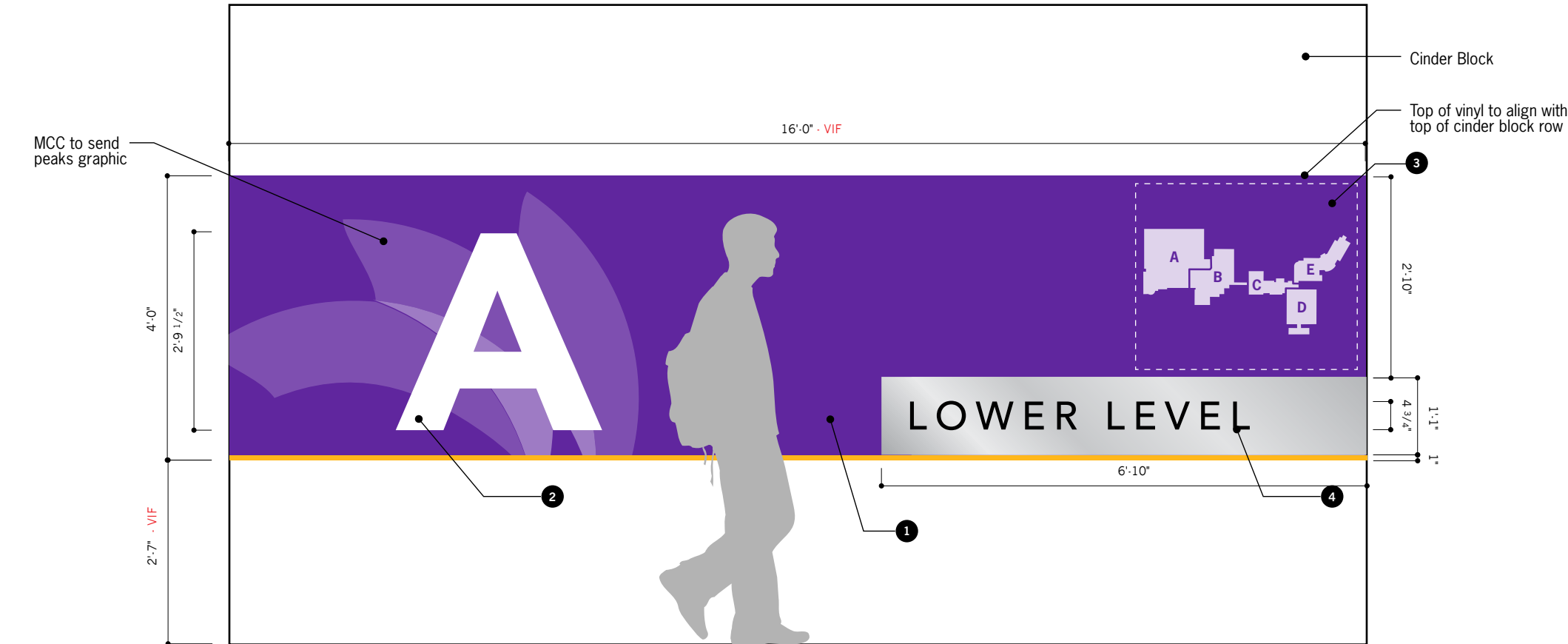


L1.2 Secondary Identification Letters
ELEVATION Scale: 3"=1'-0"

Building Entry Wall

SPECIFICATIONS

- 1 Wall Graphic**
 Custom Full-Color Artwork, by Designer
 Digitally Printed Vinyl for Textured Wall
 V5 - w/ UV Matte Protective Overlaminate
 Heat + Roller applied to wall surface
 - Per manufacturer spec.
- 2 ID Letter**
 1/2" Thk. Cut Acrylic Letter
 1st surface P95 frosted finish on face,
 2nd Surface Backpainted - Paint P4
 VHB + Silicone Tape Mount to Wall Surface
- 3 Graphic Panel**
 Custom Full-Color Artwork, by Designer
 Digitally Printed Vinyl on 1/4" Acrylic Panel
 V4 - w/ UV Matte Protective Overlaminate
 VHB + Silicone Tape Mount to Wall Surface
- 4 Level ID Panel**
 1/4" Thk. Acrylic Panel, Paint P3 All Surfaces
 w/ Cut + Applied Vinyl Lettering - Match V1
 VHB + Silicone Tape Mount to Wall Surface



Building A Lower Level
 Sign Location - A144E.02 - B1.1

NOT AN EXACT ELEVATION
 Scale: 1/2" = 1'-0"